

3, 50

№ 5

Valse.

1) Μαυρομάτα.

2) Μαργαρίτα.

Franko Doi

Μαργαρίτα Βαλς

Handwritten musical score for the first system, consisting of five staves. The first staff is in treble clef with a key signature of two flats and a 3/4 time signature. The second staff is in bass clef. The third and fourth staves are in bass clef with first and second endings marked. The fifth staff is in bass clef with a "Fine" marking.

Handwritten musical score for the second system, consisting of seven staves. The first staff is in treble clef with a key signature of two flats. The second and third staves are in bass clef with first and second endings marked. The fourth, fifth, and sixth staves are in bass clef. The seventh staff is in bass clef with the text "F. fin app' l'us lo Fine".

Limpis 1-11-1970
 Navicutas

Quartuo.

Μαργαρίτα Ραβ. -

Handwritten musical score for 'Quartuo' in G major, 4/4 time. The score consists of six staves. The first staff begins with a treble clef and a common time signature. The music features a melodic line with various note values and rests, including a first ending bracketed and marked with a '1'. The second staff continues the melody with a second ending marked with a '2'. The third and fourth staves show a more rhythmic accompaniment with eighth and sixteenth notes. The fifth and sixth staves conclude the piece with a final cadence.

Μαργαρίτα - 7

Handwritten musical score for 'Μαργαρίτα - 7' in G major, 7/8 time. The score consists of seven staves. The first staff begins with a treble clef and a 7/8 time signature. The music is characterized by a complex, syncopated rhythm with many beamed eighth and sixteenth notes. The second staff includes a first ending bracketed and marked with a '1'. The third and fourth staves continue the intricate rhythmic pattern. The fifth and sixth staves show a melodic line with some rests. The seventh staff concludes the piece with a final cadence.

Αω' τ'αυ' αρι' εις το' Ξου.

Ναυαυαυ. 4. 11⁰⁰ 1970

[Handwritten signature]

Clarinete 1^o Lib

Μαργαρίτα

Tempo di Valse

Handwritten musical score for Clarinet 1, first system. It consists of five staves of music. The first staff has a treble clef and a 3/4 time signature. The music is written in a single line with various notes, rests, and slurs. There are four measures marked with numbers 1, 2, 3, and 4 below the staff. The word "Μαργαρίτα" is written in the middle of the fourth staff.

Handwritten musical score for Clarinet 1, second system. It consists of two staves of music. The first staff has a treble clef and a 3/4 time signature. The music is written in a single line with various notes, rests, and slurs. There are two measures marked with numbers 1 and 2 below the staff.

Handwritten musical score for Clarinet 1, third system. It consists of two staves of music. The first staff has a treble clef and a 3/4 time signature. The music is written in a single line with various notes, rests, and slurs. There are two measures marked with numbers 1 and 2 below the staff.

Handwritten musical score for Clarinet 1, fourth system. It consists of one staff of music. The staff has a treble clef and a 3/4 time signature. The music is written in a single line with various notes, rests, and slurs. The word "Luz to Fine" is written below the staff.

Αθήνα 30-10-1970 Ν. Δοξιάτης

Clarinete II

Μαργαρίτα Tabb

Μαργαρίτα

Από τις αρχές της Γραμμής Νανιούτσου 1-11-1970

Handwritten signature

Lux fou Alto.

Μουσική

Ταχὺς

Handwritten musical score for the first section, consisting of six staves of music. The notation includes various notes, rests, and dynamic markings such as *p* and *f*. The music is written in a single system across the staves.

Μουσική

Handwritten musical score for the second section, consisting of seven staves of music. The notation includes various notes, rests, and dynamic markings such as *p* and *f*. The music is written in a single system across the staves.

Ναυαρέλιος 1-11-1970 Συμφωνία

Απ. Κουρμπιλιού το παιδί

Luxo fono Tenore Lib

Μαυροπίδα Ραλλε

Μαυροπίδα

Σο' his axi' laf to Esue

31 Οκτωβρίου 1970 Νέωςαίτη
αυτογράφος

Cotuita I

Marpiza fals

Handwritten musical score for Cotuita I. The score is written on a single staff with a treble clef and a 3/4 time signature. It begins with a key signature of one flat (B-flat). The music consists of several measures of music, including a triplet of eighth notes. There are dynamic markings such as 'p' (piano) and 'f' (forte). The score ends with a double bar line and a fermata.

Marpiza

Handwritten musical score for Marpiza. The score is written on a single staff with a treble clef and a 7/8 time signature. It begins with a key signature of one flat (B-flat). The music consists of several measures of music, including a triplet of eighth notes. There are dynamic markings such as 'f' (forte). The score ends with a double bar line and a fermata.

Handwritten signature or initials.

Handwritten text: "fals to fine"

Ελευσμο 1/2

Μαυρομύτη. Vals

Handwritten musical score for 'Ελευσμο 1/2' in 3/4 time. The score consists of six staves. The first staff is the melody, starting with a treble clef and a key signature of one flat. The second staff is the accompaniment, starting with a bass clef. The music includes various rhythmic values, slurs, and dynamics such as 'f' and 'p'. There are also some handwritten annotations like '12' and '3' above notes.

Μαυρομύτη 1/2

Handwritten musical score for 'Μαυρομύτη 1/2' in 8/8 time. The score consists of six staves. The first staff is the melody, starting with a treble clef and a key signature of one flat. The second staff is the accompaniment, starting with a bass clef. The music includes various rhythmic values, slurs, and dynamics such as 'f' and 'p'. There are also some handwritten annotations like '1' and '2' above notes.

D. C. Solo 40 Five -

[Handwritten signature]

30-10-1970
Nawanto

Corum II + III

Μαυρονίτα.

Καθ.

Eufonio.

Μαργαρίτα Ραβ

Συνθέτη: 31. Οκτωβρίου 1970
 Νάυπαιος

Alt. even. Lib.

Μαροπούλα. Tabs-

Μαροπούλα

Handwritten signature
 31-10-1970
 Χαϊωααααα

Bebasse -

Μαυρογιάτα

Ταβέ

Handwritten musical notation for the first staff of the piece. It begins with a treble clef and a 3/4 time signature. The melody consists of quarter and eighth notes. Above the staff, there are handwritten numbers 2, 3, 4, 5, and 6, likely indicating fingerings or specific notes.

Handwritten musical notation for the second staff, continuing the melody with various note values and rests.

Handwritten musical notation for the third staff, featuring a double bar line and a fermata over a note.

Handwritten musical notation for the fourth staff, showing a continuation of the melodic line.

Handwritten musical notation for the fifth staff, including a triplet of eighth notes.

Handwritten musical notation for the sixth staff, with a fermata over a note.

Handwritten musical notation for the seventh staff, ending with a double bar line and the word "Fine" written below.

Handwritten musical notation for the eighth staff, starting with a treble clef and a 3/4 time signature.

Handwritten musical notation for the ninth staff, continuing the piece.

Handwritten musical notation for the tenth staff, featuring a double bar line and a fermata.

Handwritten musical notation for the eleventh staff, showing a continuation of the melodic line.

Handwritten musical notation for the twelfth staff, ending with a double bar line and a fermata.

Από το Αρχείο της Γραμ

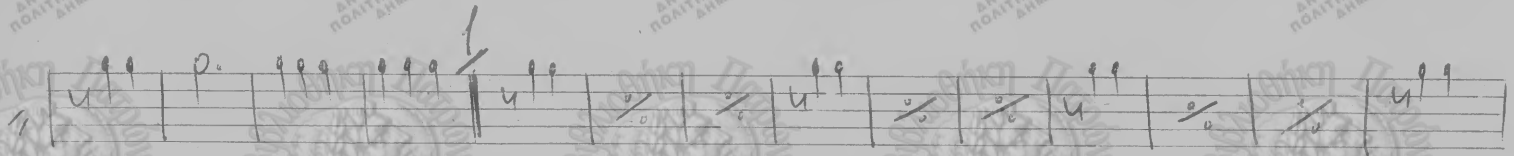
1970
 Νάτσιου
 [Signature]

Κομπούσε 1^ο

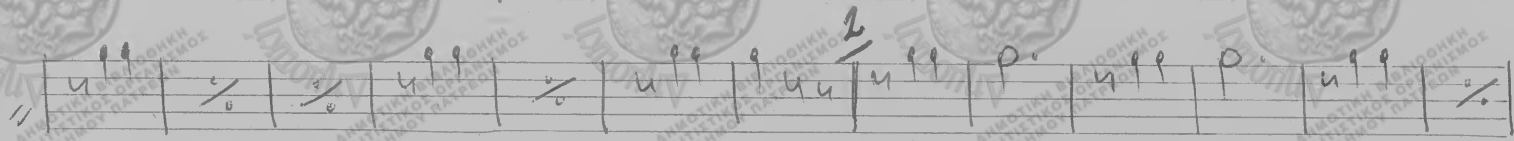
Μαυροπούλα Vals.



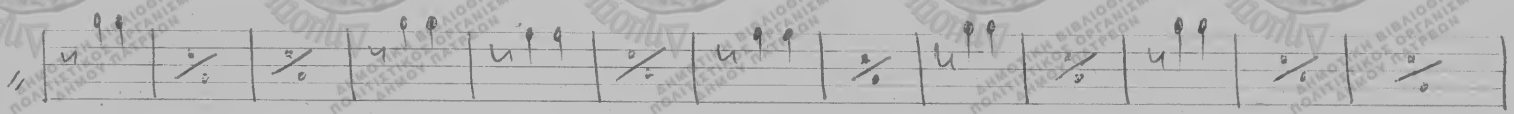
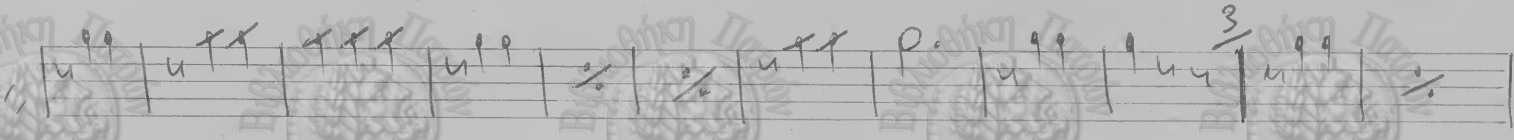
16



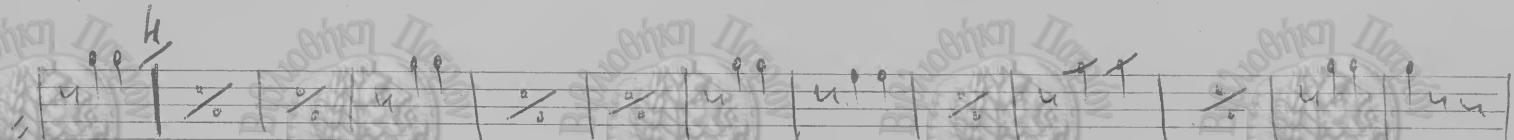
17



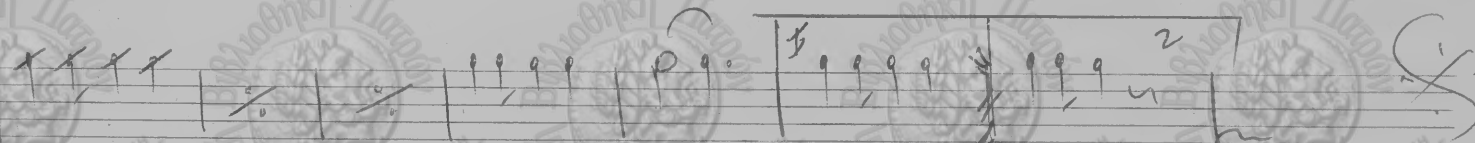
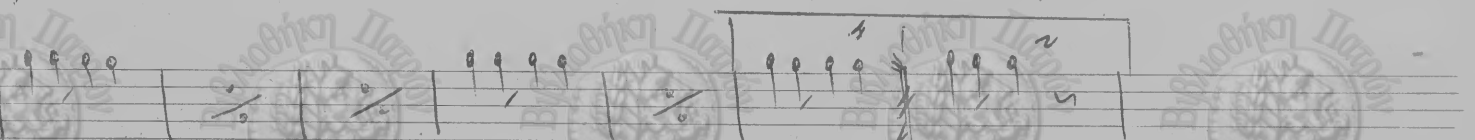
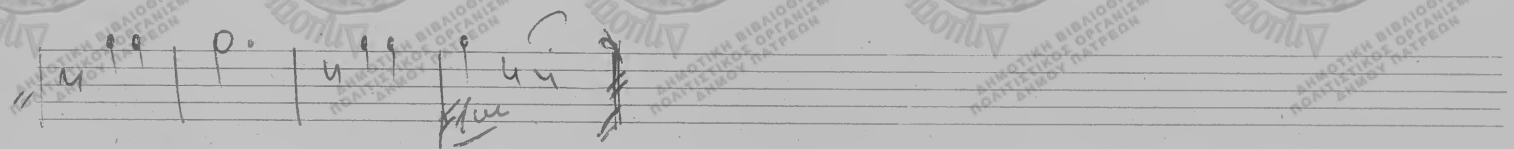
16



16



16



Αντί της Αργυρής της Ξύλου

1. 14^η 1970

Ναϊσάντο

[Signature]

Trombone I & II

Μαυραγιάς

Tab. 5.

Handwritten musical notation on a five-line staff. It begins with a treble clef, a key signature of two flats (B-flat and E-flat), and a 3/4 time signature. The first measure contains a whole note chord. The notation continues with several measures of chords and rests, some marked with a double bar line and a repeat sign.

Handwritten musical notation on a five-line staff, continuing the piece. It features a series of chords and rests, with some notes beamed together. A first ending bracket is visible over the final few measures.

Handwritten musical notation on a five-line staff. It includes a second ending bracket labeled with the number '2' above it. The notation consists of chords and rests.

Handwritten musical notation on a five-line staff. It continues with chords and rests, ending with a double bar line.

Handwritten musical notation on a five-line staff. It begins with a first ending bracket labeled with the number '3' above it. The notation consists of chords and rests.

Handwritten musical notation on a five-line staff. It begins with a first ending bracket labeled with the number '4' above it. The notation consists of chords and rests.

Handwritten musical notation on a five-line staff. It concludes with a double bar line and the word "Fine" written in italics.

Μαυραγιάς 1

Handwritten musical notation on a five-line staff. It starts with a treble clef, a key signature of two flats, and a 3/4 time signature. The notation consists of a series of chords and rests.

Handwritten musical notation on a five-line staff, continuing the piece with chords and rests.

Handwritten musical notation on a five-line staff. It includes a first ending bracket labeled with the number '4' above it. The notation consists of chords and rests.

Handwritten musical notation on a five-line staff. It continues with chords and rests.

Handwritten musical notation on a five-line staff. It includes a first ending bracket labeled with the number '2' above it. The notation consists of chords and rests.

Από τις αρχές του Τραγου

Handwritten signature

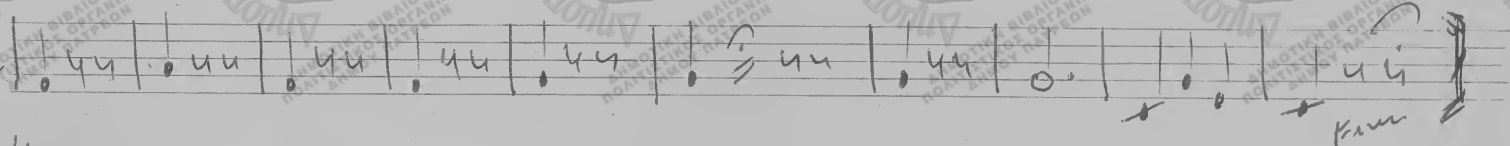
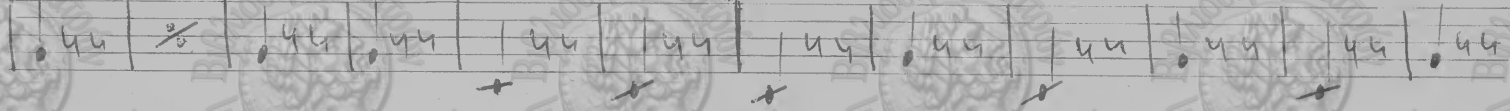
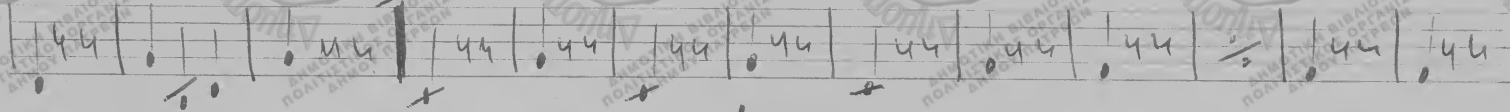
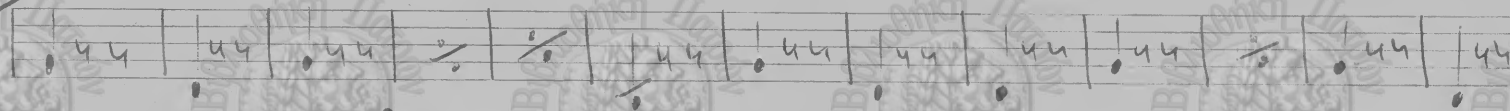
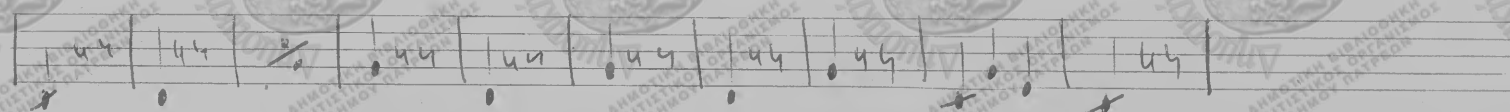
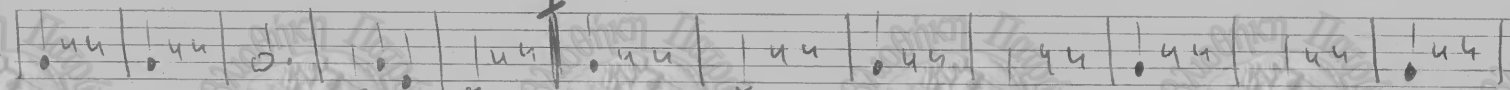
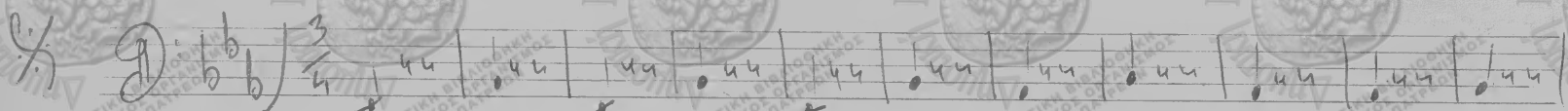
1. 10. 1970

Ναυραγιάς

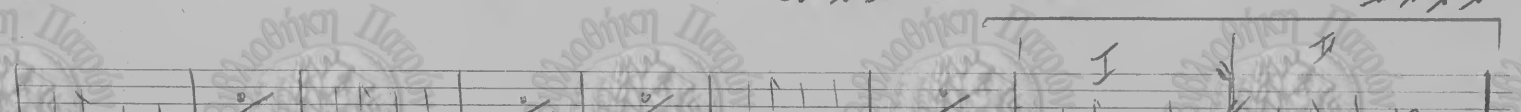
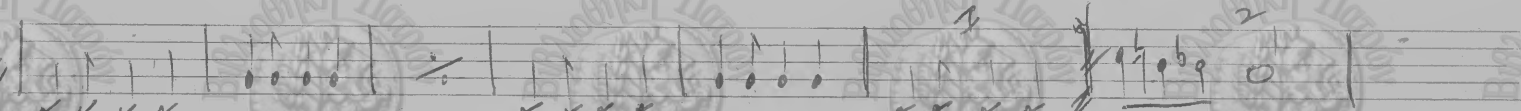
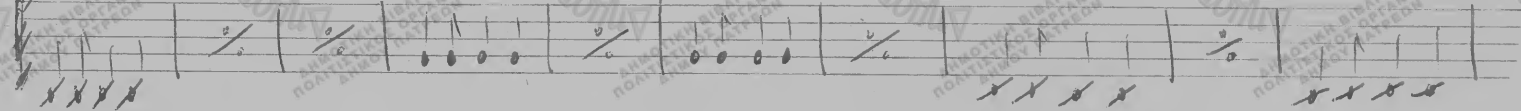
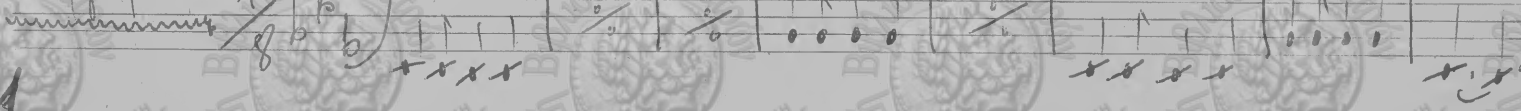
Basso mi. b

Μαυρογιάρα

Vals



Μαυρογιάρα 7



Από το αρχικό μέχρι το fine

Κυριακή 1. 11. 1970 Ναισαύτο

Casea Prati.

Μαρμαριτά Ραβ-

Handwritten musical notation on a single staff, starting with a treble clef and a 3/4 time signature. The notes are written in a shorthand style, possibly representing a vocal line.

Handwritten musical notation on a single staff, continuing the piece with various note values and rests.

Handwritten musical notation on a single staff, showing a continuation of the melody.

Handwritten musical notation on a single staff, including a measure with a '6' above it, possibly indicating a measure rest or a specific rhythmic value.

Handwritten musical notation on a single staff, ending with a double bar line and a fermata. Below the staff, the word "Fine" is written.

Μαρμαριτά

Handwritten musical notation on a single staff, starting with a treble clef and a 2/8 time signature. The notes are written in a shorthand style.

Handwritten musical notation on a single staff, continuing the melody.

Handwritten musical notation on a single staff, ending with a double bar line and a fermata. Below the staff, the text "Από τὴν ἀρχὴν εἰς τὴν" is written.

Handwritten signature: *Σταυρὸς Πάριος*

30-10

1970

Tambora

Marzouka

Alas

Handwritten musical notation for Tambora, Marzouka, and Alas. The notation is written on three systems of staves. The first system (Tambora) starts with a treble clef and a 3/4 time signature. The second system (Marzouka) starts with a treble clef and a 2/4 time signature. The third system (Alas) starts with a treble clef and a 2/4 time signature. The notation includes various rhythmic values, accidentals, and bar lines.

Marzouka

Handwritten musical notation for Marzouka. The notation is written on two systems of staves. The first system has a treble clef and a 2/4 time signature. The second system has a treble clef and a 2/4 time signature. The notation includes various rhythmic values, accidentals, and bar lines.

Ασ' τὴν ἀρχὴν τῆς φαύλης

Συνήχη