

ΨΥΧΟΤΕΤΡΑΜΑΡΧΟ ΒΟΥΛΟ

No

MENOYEHΣ

TENTOZNAHE

FLICORN. 8i = ΨΟΧΟΤΕΡΑΙΩΡΟ ΒΟΥΝΟ.

No I ΤΒΑΝΙΟΣ

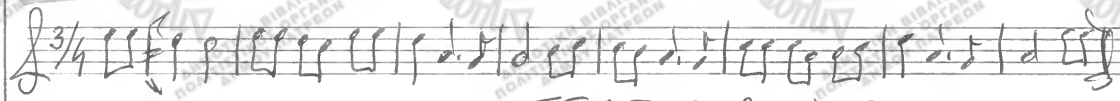
No II ΤΑΥΟΝ ΤΑΥΟΝ. ΤΒΑΝΙΟΣ.

ΡΕΤ. Ημε | 9. | 9. | 9. | 9. Ημε

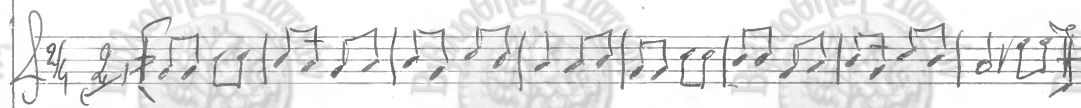
the

Π Κοεντζα

ΜΕΝΟΥΣΗΣ



ΤΕΝΤΟΖΑΛΗΣ



ΔΥ. ΚΑΡ. ΜΙΣ

ΤΡΑΠΕΖΑ

ΣΑΡΑΝΤΑ

No

Handwritten musical score for a piece titled "No". The score is written on four staves in 7/8 time with a key signature of one sharp (F#). The notation includes various rhythmic values, accidentals, and dynamic markings. There are three circled numbers (1, 2, 3) above the first three staves. The word "ΚΟΕ ΠΑΡΤΑ" is written below the second staff. The piece concludes with a double bar line.

Handwritten musical score consisting of four staves of music in 4/4 time with a key signature of one sharp (F#). The notation includes various rhythmic values, accidentals, and dynamic markings. There are circled numbers 1, 2, and 3 above the first three staves. The piece concludes with a double bar line.

ΣΑΡΑΝΤΑ

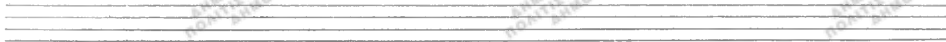
ΚΑΡΑΓΙΩΡΓΗ

ΡΑΧΕΩΝ. ΠΑΙΣ

ΑΙΜΩΤΥΣ ΟΙ.

ΑΔΑΜΑ. Γ.

№



ΕΙΣ ΤΗΝ ΟΥΡΑΝΟΝ

Handwritten musical score for the hymn "ΕΙΣ ΤΗΝ ΟΥΡΑΝΟΝ". The score is written on four staves. The first staff is the vocal line, starting with a treble clef and a 4/4 time signature. The second and third staves are for the piano accompaniment, with the second staff using a bass clef and the third staff using a treble clef. The music is in a key with one sharp (F#) and includes various rhythmic values such as eighth and sixteenth notes, as well as rests. The piece concludes with a double bar line and a fermata. The word "F" is written below the final measure of the piano accompaniment.

Ε. Ε.

ΤΕΛΟΣ

ΙΑΧ. ΚΑΝ.

Λαχάκι

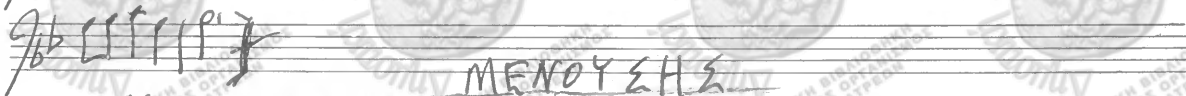
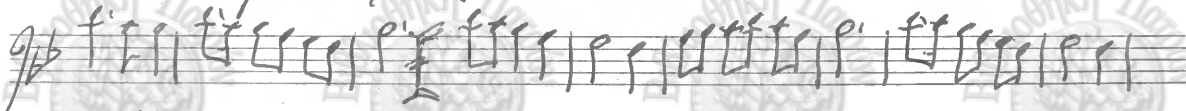
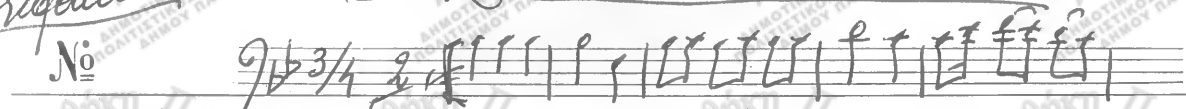
επεισόδιο

No

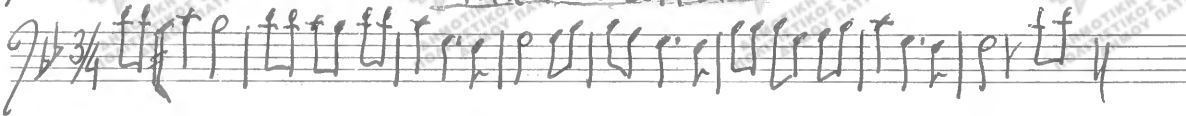
Ευαγγέλιο

Χυλοζερράκορο θούρο

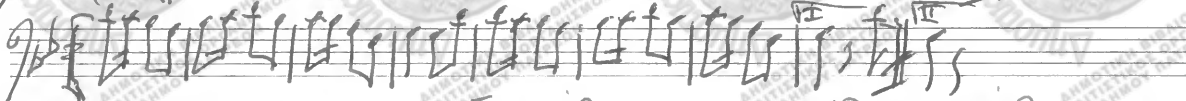
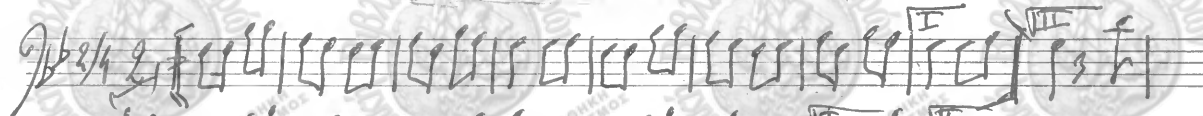
No



ΜΕΝΟΥΣΗΣ



ΠΕΝΤΟΖΑΛΗΣ



Eufonia

Η ΠΑΡΑΚΕΥΟΥΣΑ

No

Κοστιατά

Σύντομο Παράδειγμα

Solfeggio

No

Ψαλμωδία Κορφο Βασίλειο

Handwritten musical notation for the first system, consisting of three staves. The first staff begins with a treble clef, a key signature of two flats (B-flat and E-flat), and a 3/4 time signature. The notation includes various rhythmic values such as quarter, eighth, and sixteenth notes, along with rests and bar lines.

ΚΟΣΤΙΛΑΤΑ

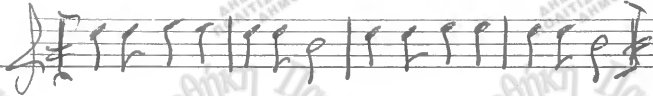
Handwritten musical notation for the second system, consisting of two staves. The first staff begins with a treble clef, a key signature of two flats, and a 7/8 time signature. The notation continues with complex rhythmic patterns and rests.

Handwritten musical notation for the third system, consisting of two staves. The first staff begins with a treble clef, a key signature of two flats, and a 6/8 time signature. The notation includes various rhythmic values and rests.

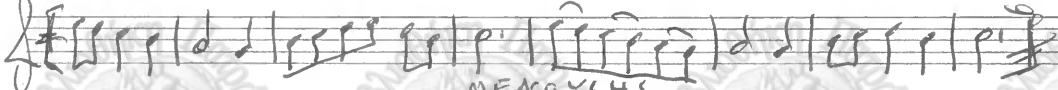
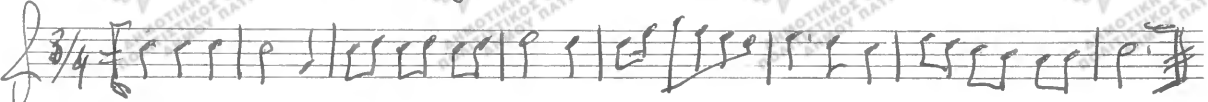
Κλαίρο ει

Σὺν ἰσὶν ἡαχαγᾶ

No



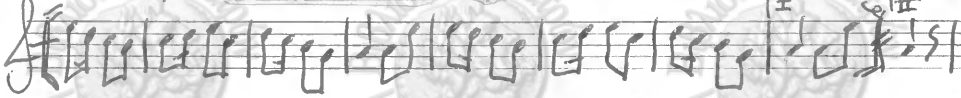
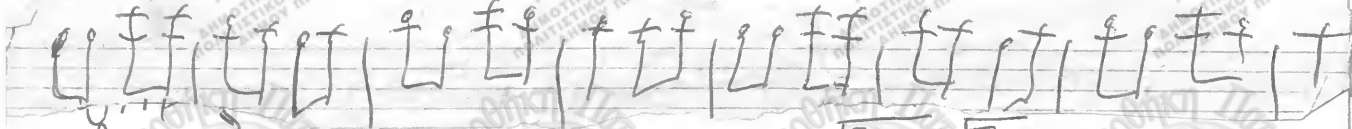
ἑρῶν ἐρᾶσσερῶ βουρο



ΜΕΝΟΥΣΗΣ



ΠΕΝΤΟΖΑΛΗΣ



ΚΑΡΔΙΝΟ ΣΙΣ

Παρονομοσ

No

Handwritten musical score for 'ΚΑΡΔΙΝΟ ΣΙΣ'. It consists of three staves. The first staff is a vocal line in G major, 9/8 time, starting with a treble clef and a sharp sign. The second and third staves are accompaniment lines, with the second staff starting with a treble clef and a sharp sign, and the third staff starting with a bass clef and a sharp sign. The music is written in a fluid, handwritten style.

Κοιτινάτα

Handwritten musical score for 'Κοιτινάτα'. It consists of two staves. The first staff is a vocal line in G major, 7/8 time, starting with a treble clef and a sharp sign. The second staff is an accompaniment line in G major, 7/8 time, starting with a bass clef and a sharp sign. The music is written in a fluid, handwritten style.

Handwritten musical score for 'Κοιτινάτα' (continued). It consists of two staves. The first staff is a vocal line in G major, 7/8 time, starting with a treble clef and a sharp sign. The second staff is an accompaniment line in G major, 7/8 time, starting with a bass clef and a sharp sign. The music is written in a fluid, handwritten style.

Classical

No

Handwritten musical score for the first system. It consists of three staves. The top staff is in treble clef, the middle in bass clef, and the bottom in bass clef. The key signature is one sharp (F#) and the time signature is 4/8. The music includes various note values, rests, and dynamic markings like 'p' and 'f'. There are circled numbers 1 and 2 above the first and second staves respectively. The first staff ends with a double bar line and a repeat sign. The second staff has a 'f' marking and a repeat sign. The third staff ends with a double bar line.

Handwritten musical score for the second system. It consists of three staves. The top staff is in treble clef, the middle in bass clef, and the bottom in bass clef. The key signature is one sharp (F#) and the time signature is 4/8. The music includes various note values, rests, and dynamic markings like 'ff'. There are circled numbers 1 and 2 above the first and second staves respectively. The first staff ends with a double bar line and a repeat sign. The second staff has a 'ff' marking and a repeat sign. The third staff ends with a double bar line.

Ερωτικό

№

Handwritten musical score on four staves. The notation includes treble and bass clefs, a 2/4 time signature, and various musical symbols such as notes, rests, and bar lines. The score is written in black ink on a white background.

Αριθμός: 115

№

Handwritten musical notation for the first system, consisting of three staves with notes and rests.

ΠΙΣΤΩΣΗ

Η ΠΑΡΑΣΚΕΥΗ

Handwritten musical notation for the second system, consisting of two staves with notes and rests.

Empty musical staves for the third system.

Ερωτικό με 6 τον νότιο Μανόλα Μανωτόπουλος
Lento

No

ΜΕΝΟΥΣΗΣ

ΑΕΝΤΟΖΑΛΗΣ

Quantum No. 6

No

Παρθένω. Νό. 6

Παρθένω. Νό. 6

№

Handwritten musical score for 'Παρθένω. Νό. 6'. The score is written on four staves. The first staff is in treble clef with a key signature of one sharp (F#) and a 3/8 time signature. The second staff is in bass clef. The third and fourth staves are in bass clef. The music consists of a series of rhythmic patterns, including eighth and sixteenth notes, and rests. There are some markings above the notes, possibly indicating fingerings or breath marks. The score ends with a double bar line and a fermata.

De

Παρθένω

Ερωταγωγή: Α. Βασιλάκης

№



Handwritten musical score for guitar, consisting of four staves. The first staff is in treble clef with a 3/4 time signature. The second staff is in bass clef. The third and fourth staves are in bass clef and contain a bass line. The score includes various musical notations such as notes, rests, and accidentals. At the end of the fourth staff, there is a signature and the text "D. L.".

D. L.

Ρεσπεκτιβό Μπ. 6 Η Πάρα Ουλουάδα. Σέρβοι

No

Handwritten musical notation for the first system, consisting of two staves with treble clefs and a key signature of one sharp (F#). The first staff contains a melody with eighth and sixteenth notes, and the second staff contains a rhythmic accompaniment with eighth notes and rests.

Handwritten musical notation for the second system, consisting of four staves. The first staff has a treble clef and a 3/8 time signature. The second and third staves contain a melody with eighth notes and rests. The fourth staff contains a bass line with eighth notes and rests. The system ends with a double bar line and a fermata.

Α. Β. Κ.

ΒΑΡΣΟ. Mi^b. Ψυχοστραγιάριχο Βουρό Τζάμπιου

No 1

Musical staff with treble clef, key signature of two flats (B-flat and E-flat), and 3/4 time signature. The melody begins with a quarter note G4, followed by quarter notes A4, B-flat4, and C5.

Musical staff continuing the melody from the previous staff, featuring a series of quarter notes and a final quarter rest.

Musical staff with a treble clef, key signature of two flats, and 3/4 time signature. The melody continues with quarter notes, ending with a double bar line and a repeat sign.

No II. Τάσου Τάσου. Τζάμπιου.

Musical staff with treble clef, key signature of two flats, and 3/4 time signature. The melody starts with a quarter note G4, followed by quarter notes A4, B-flat4, and C5.

Musical staff with treble clef, key signature of two flats, and 3/4 time signature. The melody continues with quarter notes and rests.

Musical staff with treble clef, key signature of two flats, and 3/4 time signature. The melody continues with quarter notes and rests.

Musical staff with treble clef, key signature of two flats, and 3/4 time signature. The melody continues with quarter notes and rests.

Musical staff with treble clef, key signature of two flats, and 3/4 time signature. The melody continues with quarter notes and rests.

Musical staff with treble clef, key signature of two flats, and 3/4 time signature. The melody continues with quarter notes and rests.

Βασιλική Μουσική Σχολή

No

Handwritten musical score on three staves. The top staff is a treble clef with a 7/8 time signature. The middle staff is an alto clef. The bottom staff is a bass clef. The music is handwritten and includes various notes, rests, and bar lines. There are some handwritten annotations in the bottom right of the third staff, possibly 'p' and 'mf'.

Four empty musical staves for notation.

Basso Sib

Η Παρέρουσα

No

Handwritten musical notation for the first system of 'Η Παρέρουσα'. It consists of two staves. The top staff is a treble clef with a key signature of one flat (Bb) and a time signature of 7/8. The bottom staff is a bass clef with a key signature of one flat (Bb). The music features a melody in the treble clef and a bass line in the bass clef. There are three circled numbers (1, 2, 3) above the first few notes of the melody.

Κοσμάρα

Handwritten musical notation for the first staff of 'Κοσμάρα'. It is a treble clef with a key signature of one flat (Bb) and a time signature of 7/8. The music features a melody with many sixteenth notes.

Handwritten musical notation for the second staff of 'Κοσμάρα'. It is a bass clef with a key signature of one flat (Bb) and a time signature of 7/8. The music features a bass line with many sixteenth notes.

Είν σπάρω μαχαλά

Handwritten musical notation for the first staff of 'Είν σπάρω μαχαλά'. It is a treble clef with a key signature of one flat (Bb) and a time signature of 7/8. The music features a melody with many sixteenth notes.

Handwritten musical notation for the second staff of 'Είν σπάρω μαχαλά'. It is a bass clef with a key signature of one flat (Bb) and a time signature of 7/8. The music features a bass line with many sixteenth notes.

Basso Si♭

Ύμνος εὐαγγελίου

No

Musical notation for the first system, including a treble clef, a key signature of two flats (B♭ and E♭), and a 3/4 time signature. The notation consists of a single melodic line on a five-line staff.

ΜΕΝΟΥΣΗ

Musical notation for the second system, continuing the melody from the first system. It features a treble clef, a key signature of two flats, and a 3/4 time signature.

ΠΟΡΤΑ. Α.

ΤΑΙΝΙΑ

№



Handwritten musical notation on four staves. The first staff begins with a treble clef, a key signature of one sharp (F#), and a 2/8 time signature. The notation consists of rhythmic patterns of eighth notes, with some notes beamed together. There are two large, dark, scribbled-out marks above the first two measures of the first staff. The notation continues across the four staves, with various rhythmic groupings and bar lines. A watermark of the Hellenic Republic seal and text is visible in the background.

Co. 24.

Πατριωτική Δίπλωμα

No

Handwritten musical notation for the first system. It features a treble clef, a key signature of one sharp (F#), and a time signature of 7/8. The notation is spread across two staves. The first staff contains a series of eighth and sixteenth notes, with a circled number '1' above the first measure. The second staff continues the melody, with circled numbers '2' and '3' above the first and third measures respectively. The piece concludes with a double bar line and repeat dots.

Handwritten musical notation for the second system. It features a treble clef, a key signature of one sharp (F#), and a time signature of 3/8. The notation is spread across three staves. The first staff contains a series of quarter notes, with a circled number '1' above the first measure. The second and third staves continue the melody, with circled numbers '2' and '3' above the first and second measures respectively. The piece concludes with a double bar line and repeat dots.

№

Handwritten musical score on three staves. The first staff is a treble clef with a key signature of one sharp (F#) and a time signature of 3/8. The second and third staves contain rhythmic notation with stems and beams. The second staff has a '2' above it, and the third staff has a '3' above it. The notation is handwritten and appears to be a sketch or a first draft of a piece of music.

CORNI A. Ψηλοτετραώρογο Βουρο. Τάξιμος

Τσίριφο

No 1

No 2 Τάου Τάου. Τάξιμος

Π. e. g. Pet. Fine

2-2-77. Τσαρτζιάνης

100011

№



0. 2.

Co. 111. 2.

Handwritten title in Greek script

Handwritten signature

No

Handwritten musical score for the first system, featuring a treble clef, a key signature of one sharp (F#), and a 7/8 time signature. The music consists of two staves with various notes, rests, and dynamic markings. Circled numbers 1, 2, and 3 are placed above the notes to indicate specific points of interest or corrections.

Handwritten title in Greek script

Handwritten musical score for the second system, featuring a treble clef, a key signature of one sharp (F#), and a 7/8 time signature. The music consists of three staves with various notes, rests, and dynamic markings. The word "Crescendo" is written below the first staff, and "Tutti" is written below the second staff.

CORNI. A. ΨΟΛΟΙΣ ΤΡΑΥΡΩΘ. ΒΟΥΡΟ΄ ΤΣΑΪΜΙΟΣ

№ 1.

Handwritten musical score for No. 1, featuring three staves with notes and rests. The first staff begins with a treble clef, a 3/4 time signature, and a key signature of one flat (B-flat). The music consists of a series of eighth notes and rests. The second staff continues the melody with similar notation. The third staff includes a section marked 'F.' and ends with a double bar line and a fermata.

№ 2. ΤΑΪΟΥ ΤΑΪΟΥ. ΤΣΑΪΜΙΟΣ *Per. frue*

Handwritten musical score for No. 2, featuring three staves with notes and rests. The first staff begins with a treble clef, a 3/4 time signature, and a key signature of one flat (B-flat). The music consists of a series of eighth notes and rests. The second staff continues the melody with similar notation. The third staff includes a section marked 'F.' and ends with a double bar line and a fermata.

Per. frue

No

Handwritten musical score for the first system. It consists of three staves of music. The first staff is in treble clef with a key signature of one sharp (F#) and a 3/4 time signature. The second and third staves are in bass clef. The music is written in a simple, rhythmic style. Below the staves, the title "Μενούονη" is written in a stylized, handwritten font.

Handwritten musical score for the second system. It consists of a single staff of music in treble clef with a key signature of one sharp (F#) and a 3/4 time signature. The music is written in a simple, rhythmic style. Below the staff, the title "ΠΕΝΤΟΖΑΛΗΣ" is written in a stylized, handwritten font.

Handwritten musical score for the third system. It consists of two staves of music. The first staff is in treble clef with a key signature of one sharp (F#) and a 3/4 time signature. The second staff is in bass clef. The music is written in a simple, rhythmic style.

Πατριάρχης Ἰεροσολύμων Ἰωάννης Β' Ἐπισκοπὸς Ἱεροσολύμων

№

Handwritten musical notation on three staves. The first staff is a treble clef with a key signature of one sharp (F#) and a 3/8 time signature. The second staff is an alto clef with a key signature of one sharp (F#) and a 3/8 time signature. The third staff is a bass clef with a key signature of one sharp (F#) and a 3/8 time signature. The notation consists of rhythmic patterns of eighth and sixteenth notes with stems, and rests, organized into measures by vertical bar lines.

Παρασκευάση Βαυρί Τεταρτοῦ Γραμματικῆς

No

Τεταρτοῦ

Cornețu A. 4 Parabuceni de Lupeni

2004

No

Handwritten musical notation on a single staff, including a treble clef, a key signature of one sharp (F#), and a 3/4 time signature. The notation begins with a circled number 1 above the first measure.

Handwritten musical notation on a single staff, continuing from the previous staff. It begins with a circled number 2 above the first measure.

Handwritten musical notation on a single staff, continuing the piece.

Handwritten musical notation on a single staff, continuing the piece. It features a double bar line and a repeat sign.

Handwritten text, possibly a title or subtitle, written above the second system of music.

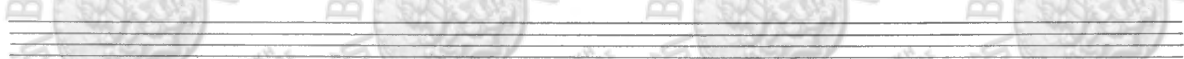
Handwritten musical notation on a single staff, continuing the piece.

Handwritten musical notation on a single staff, continuing the piece.

Handwritten musical notation on a single staff, continuing the piece.

Handwritten text at the bottom of the page, possibly a signature or additional notes.

~~...~~
No. CORNETTINO ML



Handwritten musical score for Cornettinio ML. The score is written on four staves. The first staff begins with a treble clef, a key signature of one sharp (F#), and a 2/8 time signature. The music consists of a series of eighth and sixteenth notes, with some rests. The second staff continues the melody. The third staff features a similar melodic line. The fourth staff concludes the piece with a double bar line, a repeat sign, and a final cadence. The notation includes various note values, stems, and beams.

Coro - 1^o

No

Handwritten musical score for the first system, consisting of three staves. The top staff is the vocal line, and the two lower staves are piano accompaniment. The key signature has two sharps (F# and C#), and the time signature is 3/4. The piano part includes chords marked with Roman numerals I, II, III, IV, V, VI, VII, VIII, and IX. The word "KOSTIATA" is written below the piano accompaniment in the second measure of the third staff.

Handwritten musical score for the second system, consisting of four staves. The top staff is the vocal line, and the three lower staves are piano accompaniment. The key signature and time signature are consistent with the first system. The piano part includes chords marked with Roman numerals I, II, III, IV, V, VI, VII, VIII, and IX. The word "KOSTIATA" is written below the piano accompaniment in the second measure of the third staff.

Παράσκευα 14/11/1940

No 1

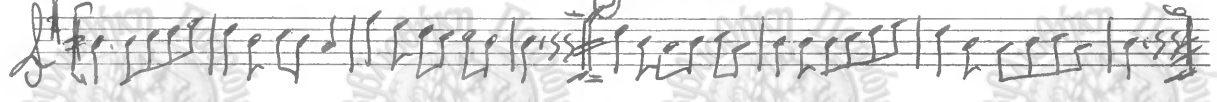
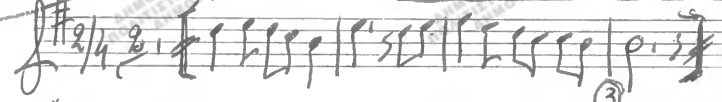
3/4



Το αὐτὸ ἴδιον ἐστὶν ἡ ἀρετή

Cornetto

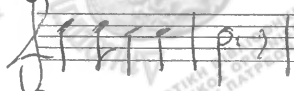
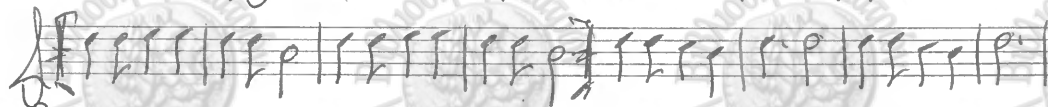
ΠΑΡΑΣΚΕΥΟΥΣ



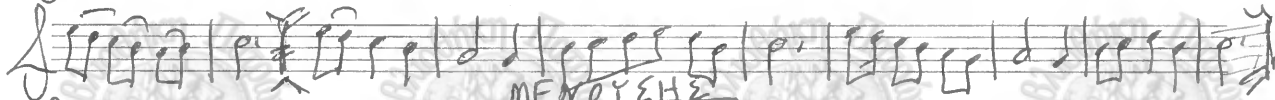
Coruetta I

Σόν Ζακάρω Μαχαρά

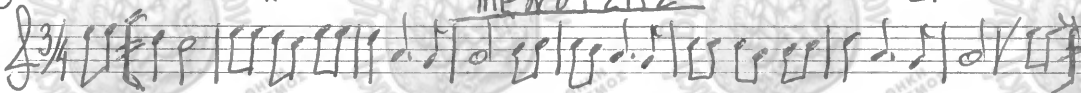
No



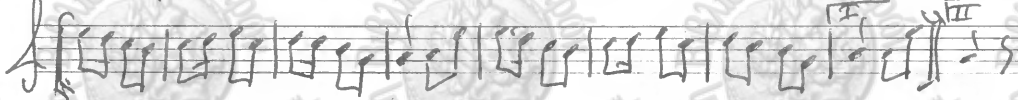
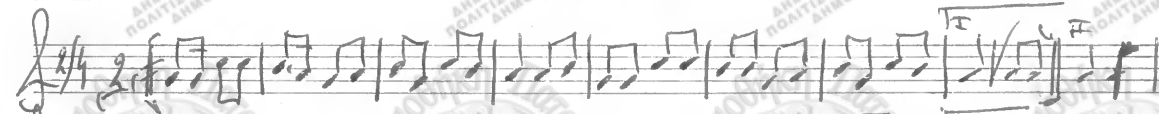
Κυρίως τὰ κροσό βαρό



ΜΕΛΟΥΣΗΣ



ΠΕΝΤΟΖΑΛΗΣ



φασολερο

Η Παρασκευαζα

No

Κοσμιζα

OXI

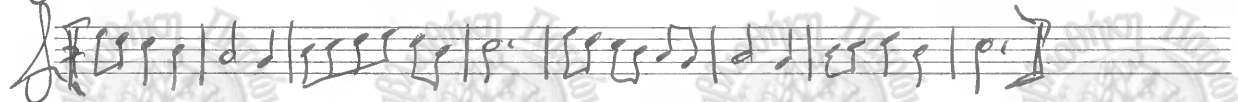
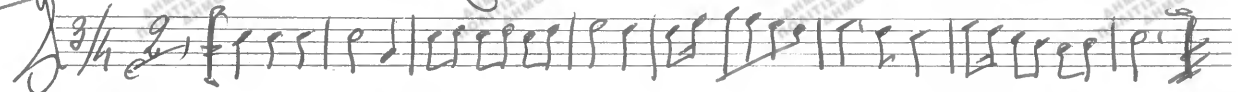
Σον Σονο μαχα

~~Handwritten scribbles and text at the top of the page, including the word "Κίμα" (Kima).~~

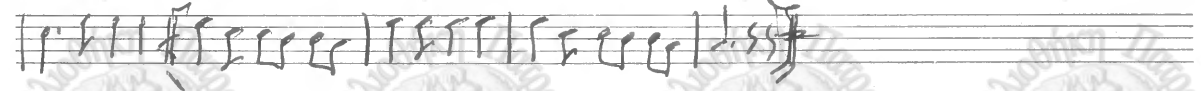
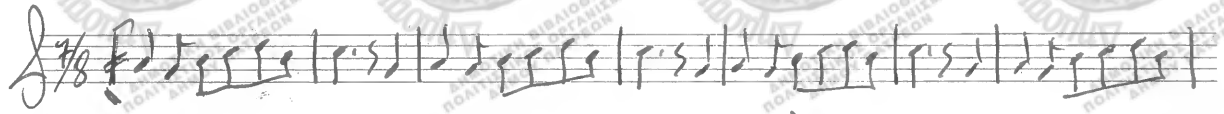
No 1



Handwritten lyrics in Greek:
Κουάπρο φουζεράνορο βουρ



ΚΟΣΤΙΑΤΑ



classical. 4096

No

Maria

Κατασκευάζω

ΚΕΣΤΙΑΑΤΑ

clarinetto II. Si^b Ανάσταση παλαιών δαιμονίων, Λυτός

No

Handwritten musical notation for the first system, consisting of three staves. The top staff begins with a treble clef, a key signature of one flat (B-flat), and a 3/8 time signature. The music consists of several measures of notes and rests.

ΚΟΣΤΙΑΡΑΤΑ

Handwritten musical notation for the second system, consisting of four staves. The notation includes various rhythmic values and rests. There are two sections of music with the word "ΠΕΝΤΟΡΑΦΗ" written below them. The first section is on the second staff, and the second section is on the third staff. Both sections are marked with Roman numerals I and II above them. The notation ends with a double bar line and a fermata.

ΕΥΦΟΝΙΟ. Α. ΨΟΔΟΤΕΤΡΑΩΡΟ ΒΟΥΡ ΤΣΑΪΛΟΥ.

No 1

Handwritten musical score for No 1, featuring three staves with notes, rests, and dynamic markings.

No II ΤΑΟΥ ΤΑΟΥ ΤΣΑΪΛΟΥ

Handwritten musical score for No II, featuring three staves with notes, rests, and dynamic markings.

Per. Fine

Handwritten musical score for Per. Fine, featuring one staff with notes and rests.

No

Handwritten musical score for the first piece. It features a treble clef, a key signature of one flat (B-flat), and a 3/4 time signature. The score consists of three staves with various musical notations including notes, rests, and bar lines.

ΜΕΝΟΥΣΗΣ

Handwritten musical score for the second piece. It features a treble clef, a key signature of one flat (B-flat), and a 3/4 time signature. The score consists of a single staff with rhythmic notation.

ΚΕΝΤΟΖΑΗΣ

Handwritten musical score for the third piece. It features a treble clef, a key signature of one flat (B-flat), and a 3/4 time signature. The score consists of two staves with rhythmic notation and some accidentals.

αλκυονας λι. 6. Λόγ' ἀκούω μακάρι' μακροβίου

Καρ. 1802

No

Handwritten musical score for voice and piano. The score is written on three staves. The first staff is for the voice, starting with a treble clef, a key signature of one flat (B-flat), and a 6/8 time signature. The second and third staves are for the piano accompaniment, with the second staff starting with a bass clef. The music consists of several measures of notes and rests. The word 'Per. fine' is written below the piano part, followed by a double bar line and the word 'rhum'.

No

A handwritten musical score consisting of four staves. The first staff begins with a treble clef, a 2/4 time signature, and a key signature of one flat (B-flat). The notation includes various rhythmic values such as eighth and sixteenth notes, rests, and beams. The second and third staves continue the melodic and harmonic lines, while the fourth staff concludes the piece with a double bar line and a fermata over the final note.

ΕΥΦΟΝΙΟ. Η Παρασκευαΐδα Ζυγροί

No

PARTI-B

Handwritten musical notation for the first system, including a treble clef, a key signature of one flat, and a 6/8 time signature. The notation consists of a single melodic line with various note values and rests.

Κοβιζάδα - Παρασκευαΐδα

Handwritten musical notation for the second system, including a bass clef, a key signature of one flat, and a 6/8 time signature. The notation consists of a single melodic line with various note values and rests.

9 τεζο

Handwritten signature

5-2-1977

Γαπ/αυα

Βυφάνης, Δούκας Μαξίμου Δουροδύτης

№

Handwritten musical notation on a five-line staff. The notation includes a treble clef, a key signature of one flat (B-flat), and a time signature of 7/8. The melody consists of several measures of music with various note values and rests. The notation is written in black ink on a white background.

Empty musical staff.

Empty musical staff.

Empty musical staff.

Empty musical staff.

Empty musical staff.

Empty musical staff.

C. W. F. O. H. P. - Βρυξέλλες - Βέλγιο - Τσάινα

No

Ταύρος Τάυρος Τσάινας παραφώνος

Αλφάβητος Α. Πάπυρος Βιβλίου Μουσικής - 1 Κανόνισμος

№

Handwritten musical score for the first system, consisting of four staves. The first staff is a vocal line with a circled '1' above the first measure. The second staff is a piano accompaniment with a 'C' time signature and a 'K. S. T. I. A. T. A.' marking. The third and fourth staves are also piano accompaniment parts.

Κανόνισμος Β

Handwritten musical score for the second system, consisting of four staves. The first staff is a vocal line with a 'C' time signature. The second, third, and fourth staves are piano accompaniment parts.

Α. Παναγιώτου. Α. Παναγιώτου. Α. Παναγιώτου. Α. Παναγιώτου.

No



Four blank musical staves, each consisting of five horizontal lines, arranged vertically.



Handwritten musical score for a piece titled "ΕΠΙΘΥΜΗΤΟΝ". The score is written on four staves. The first staff begins with a treble clef, a key signature of one sharp (F#), and a time signature of 3/8. The notation includes various rhythmic values such as eighth and sixteenth notes, rests, and bar lines. The piece concludes with a double bar line and a fermata over the final note.

Τζαμλούρα Α. Ηρώλη Τζαμλούρα. 1970

No



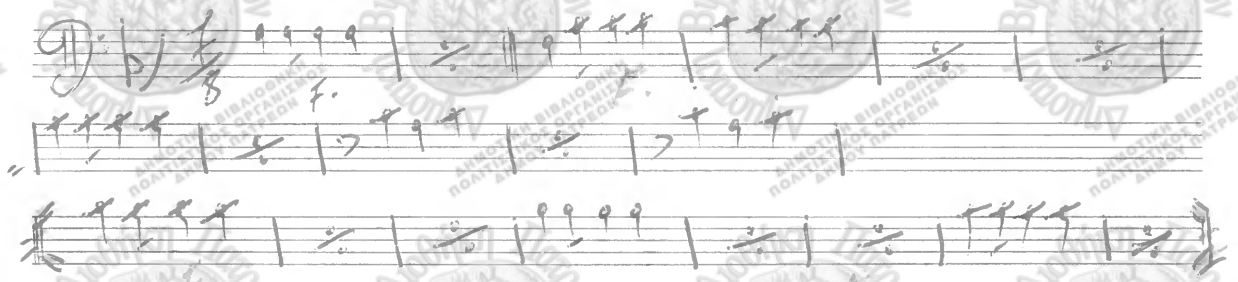
Handwritten musical notation on three staves. The notation includes a treble clef, a key signature of one sharp (F#), and a 2/4 time signature. The music consists of a melody line and two accompaniment lines. The melody line starts with a quarter rest, followed by a series of eighth and quarter notes. The accompaniment lines feature rhythmic patterns of eighth and quarter notes. The notation is written in black ink on white paper.

Τραγουδάκι

-1100-

Τραγουδάκι

No



CORINTH. II

ΚΟΡΙΝΘΙΑ.

(Handwritten notes)

No

ΕΣΤΙΝ ἑπῆνυ φωνηγῶν

Κάνω στὸ ζεῖκορο βουρὸ ΜΕΝΟΥΣΗΣ

COZNI - II.

AIKWITYBA.

No 1

No II CE ΠΥΡΟΠΟΥΣ.

No 3. Η ΠΑΡΑΒΕΒΟΥΣ Δ. ΛΟΥΠΟΣ

Βαλσαμ. Μπίκ. Κ. Τ. Βαλσαμ. Κ. Τ. Βαλσαμ. Κ. Τ.

No

① $7/8$ $2/4$

②

③

Βαλσαμ. Κ. Τ. Βαλσαμ. Κ. Τ. Βαλσαμ. Κ. Τ.

$7/8$

~~Κοπρίτσα~~
№ Κοπρίτσα F

Κοπρίτσα 2. Τμή 1/8

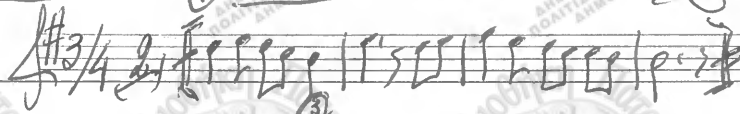
Το αυτί είναι το βέλος
Φυγέρει από κορφο βουρά

Κοπρίτσα

I
II
III

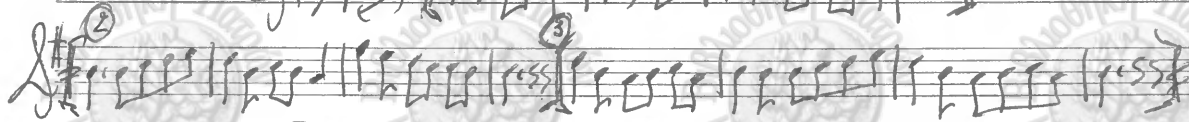
I Koerizra

No



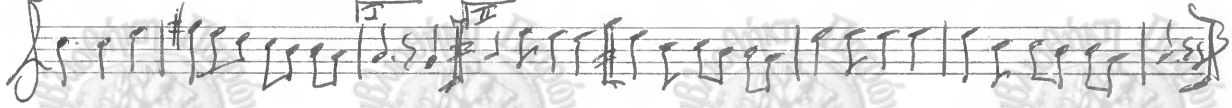
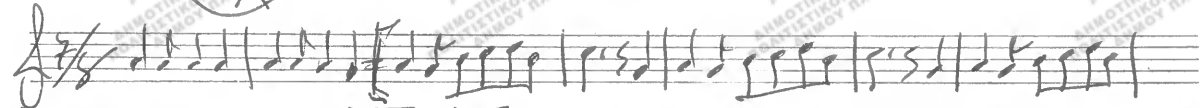
①

4η Παρασκευάζα

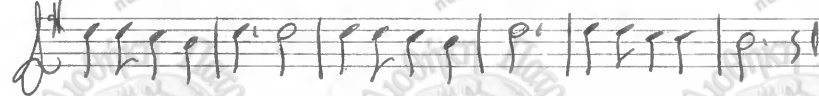
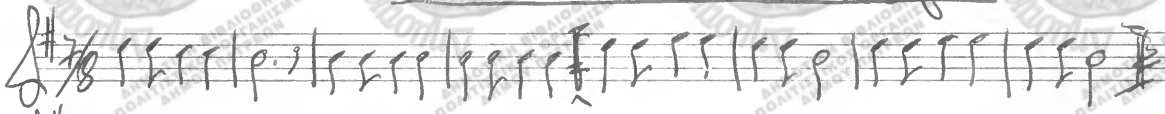


(OXI)

Κοστίζα



Είνω Γιάνω Μαχαλά



Αλλοθεν Α. Ψυχοτετριωρη Βαυρο Τβακιου

№ 1.

Handwritten musical notation for the first system of No. 1. It consists of four staves. The first staff has a treble clef, a 3/4 time signature, and a key signature of one flat. The melody is written with eighth and sixteenth notes. The second and third staves contain accompaniment with similar rhythmic patterns. The fourth staff has a bass clef and contains a few notes. There are some handwritten annotations above the first staff, including a treble clef and the word 'Καθημεριως'.

№ II. Ταυου Ταυου Τβακιου

Handwritten musical notation for the first system of No. II. It consists of four staves. The first staff has a treble clef, a 3/4 time signature, and a key signature of one flat. The melody is written with eighth and sixteenth notes. The second and third staves contain accompaniment with similar rhythmic patterns. The fourth staff has a bass clef and contains a few notes. There are some handwritten annotations above the first staff, including a treble clef and the word 'Καθημεριως'.

Α. 2-2-77

ΑΛΛΗΛΟΝ

ΑΛΛΗΛΟΝ

ΑΛΛΗΛΟΝ

No

ΜΕΝΟΥΣΗ

ΚΕΝΤΟΖΑΛΗ

SAX. SOPRANO. 2. 5. 1914

No

Επιθυρο παιδες

Handwritten musical score for saxophone soprano, titled "Επιθυρο παιδες". The score is written on four staves. The first staff begins with a treble clef, a key signature of one sharp (F#), and a 2/4 time signature. The music consists of a series of eighth and sixteenth notes, with some rests and dynamic markings. The notation is handwritten and appears to be a simple exercise or a short piece for a young student.

Λαυρα Κομματι

No

Handwritten musical notation on a single staff, starting with a treble clef, a key signature of one sharp (F#), and a 2/8 time signature. The notation consists of a series of eighth and sixteenth notes.

ΚΟΛΤΙΑΡΙΑ

Handwritten musical notation on three staves. The top staff continues the melody from the first staff. The middle and bottom staves appear to be accompaniment, featuring rhythmic patterns and some rests. The notation includes various note values and rests.

Handwritten musical notation on three staves. The top staff begins with a treble clef and a 3/8 time signature. The notation includes dynamic markings such as 'ff' and 'f'. The bottom staff ends with the word 'Finis' written in a decorative script.

Handwritten signature or name at the bottom of the page.

No

Handwritten musical score for the first system, consisting of three staves. The top staff is a vocal line in treble clef with a 3/8 time signature. The middle and bottom staves are piano accompaniment in treble and bass clefs respectively. The piano part features a rhythmic pattern of eighth and sixteenth notes. There are three circled numbers (1, 2, 3) indicating specific measures in the piano accompaniment.

Handwritten musical score for the second system, consisting of three staves. The top staff is a vocal line in treble clef with a 3/8 time signature. The middle and bottom staves are piano accompaniment in treble and bass clefs respectively. The piano part continues the rhythmic pattern from the first system. A section of the piano accompaniment in the middle staff is circled.

Дан 12/09-

4 χορ. στραμωχο Βενεζ. Τάκμος - Σερετα 2.

№ 1

Handwritten musical score for a four-part setting of "Venetian Dance - Serenade 2". The score is written on three staves. The first staff is the treble clef with a 3/4 time signature and a 4-measure rest. The second and third staves are bass clefs. The music consists of rhythmic patterns of eighth and sixteenth notes. Dynamics include "FF" (fortissimo) and "p" (piano). There are some corrections and markings on the second staff.

Τάκμος Τάμνο - Τάμνο.

Five empty musical staves for the continuation of the piece.

100070 4. Lik

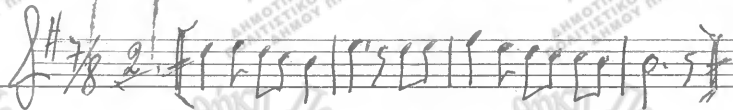
No

ΜΕΝΟΥΣΗΣ

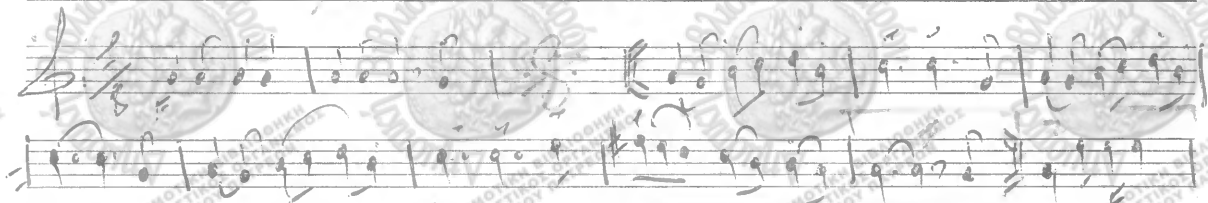
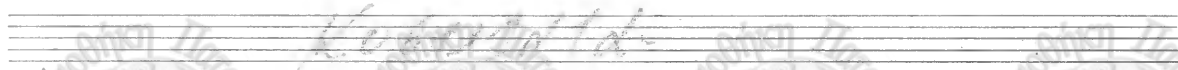
ΠΕΝΤΟΖΑΛΗΣ

Παρ. 101. Τραγούδι: Η Ήρα και ο Βούρκο. Στάνος

№



ΖΗΟΥΚ.



Παρ. Πρωτ. ΠΑΝΙΤΕ. Α. Πρωτ. 469

№

Blank musical staves for notation.

ΕΠΗΡΕΑΣΜΟΣ

Handwritten musical score for the piece 'ΕΠΗΡΕΑΣΜΟΣ'. The score is written on four staves. The first staff uses a treble clef and a 3/4 time signature. The second staff uses a bass clef. The third and fourth staves use a bass clef. The music consists of rhythmic patterns and melodic lines. There are dynamic markings such as 'F' (forte) and 'p' (piano) throughout the score. The piece concludes with a double bar line and a fermata.

Μουσική Σχολή Τριφυλίας

№ 1 *Καροζέρη*

Handwritten musical score for 'Καροζέρη'. It consists of four staves. The first staff is the treble clef with a key signature of one sharp (F#) and a 3/8 time signature. The second staff is the alto clef with a key signature of one sharp (F#). The third and fourth staves are the bass clef. The music is written in a rhythmic style with many eighth and sixteenth notes. There are circled numbers 1, 2, and 3 above the first three staves, likely indicating measures or sections.

№ 2 *Καροζέρη*

Handwritten musical score for 'Καροζέρη'. It consists of four staves. The first staff is the treble clef with a key signature of one sharp (F#) and a 3/8 time signature. The second and third staves are the bass clef. The music is written in a rhythmic style with many eighth and sixteenth notes. There are circled numbers 1, 2, and 3 above the first three staves, likely indicating measures or sections.

αριθμός 5 Αίθουσα Κερατών

№ 3



№ 4 Ενωμένοι



F. S.

Λειτουργία ἑσπέρου. Ἐσπέρου. μακάριον ἄξιον. Μακάριον.

No

ΜΕΝΟΥΣΗΣ

ΠΕΝΤΟΖΑΛΗΣ