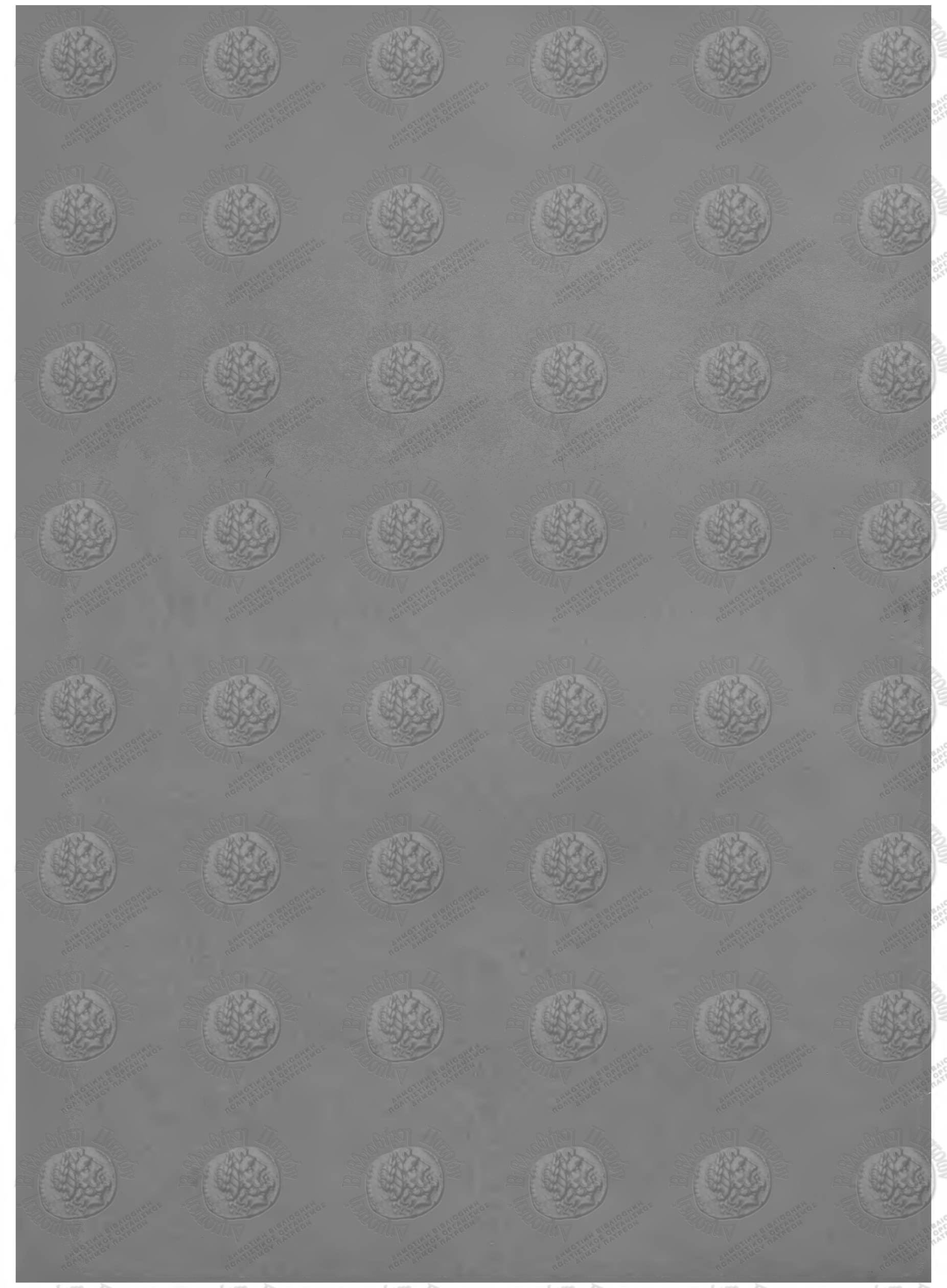


Τετάρτη
Ευφρασίω Τεταχίω

[Handwritten signature]



Τσι λυράτα του Γουριόπου. Βάλσα

A handwritten musical score for a piece titled "Τσι λυράτα του Γουριόπου. Βάλσα". The score is written on ten staves. The first staff begins with a treble clef and a 2/4 time signature. The music is written in a single system with various notes, rests, and dynamic markings. The lyrics are written below the notes in Greek. The score includes several measures of music, some with repeat signs and some with key signature changes (indicated by sharp signs). The handwriting is in black ink on aged paper. The score is annotated with various musical notations such as dynamics (e.g., *mf*, *pp*, *ppa*), articulation (accents, slurs), and performance instructions (e.g., *rit.*, *rit. b.*, *rit. f.*). The lyrics are: "Μι-φί-ρα-λά-τα του Γου-ρι-ό-που. Βάλ-σα".

Κρητικός.
 18. 9. 1915.
 Χαλκίδα

O Tazifias Agordus

Handwritten musical notation on a single staff, starting with a treble clef and a key signature of one sharp (F#). The notes are mostly quarter and eighth notes with some rests.

Handwritten musical notation on a single staff, continuing the melody with various note values and rests.

Handwritten musical notation on a single staff, featuring a change in key signature to two sharps (F# and C#) and a double bar line.

Handwritten musical notation on a single staff, continuing the piece with a mix of note values.

Handwritten musical notation on a single staff, including a section marked *rit.* (ritardando) and a double bar line.

Handwritten musical notation on a single staff, continuing the melodic line.

Handwritten musical notation on a single staff, featuring a section marked *rit.* and a double bar line.

Handwritten musical notation on a single staff, continuing the piece with various note values.

Handwritten musical notation on a single staff, including a section marked *rit.* and a double bar line.

Handwritten musical notation on a single staff, continuing the melodic line.

Handwritten musical notation on a single staff, featuring a section marked *rit.* and a double bar line.

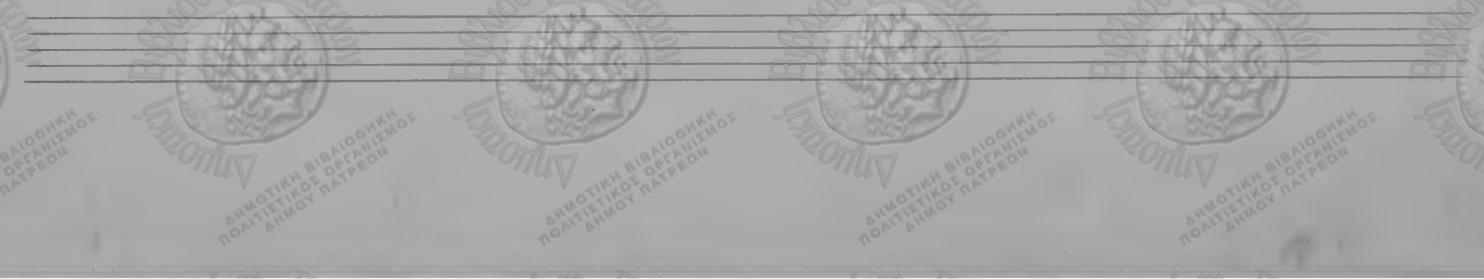
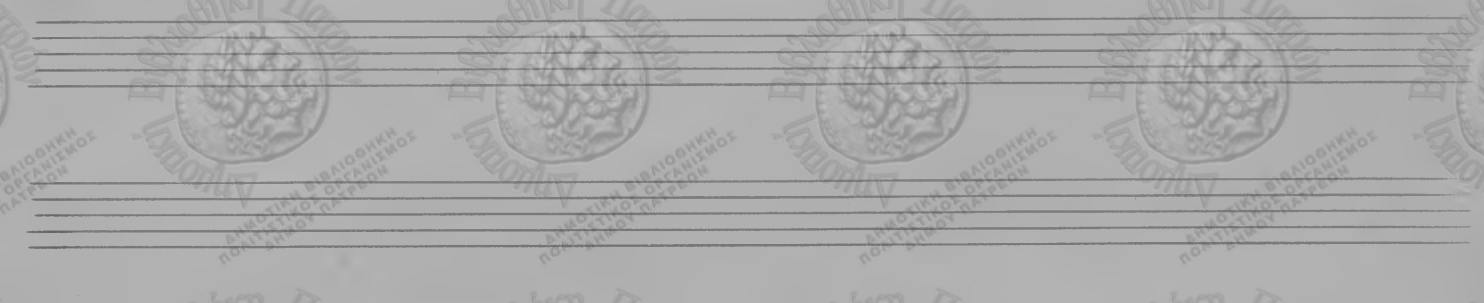
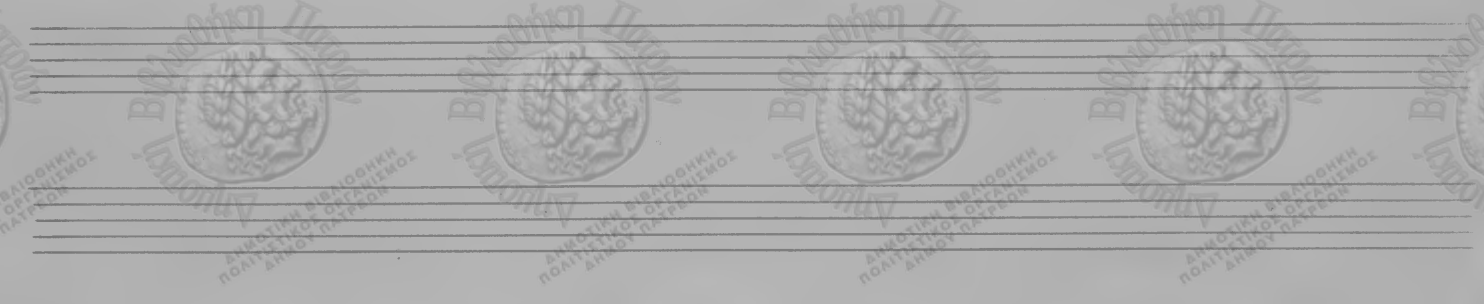
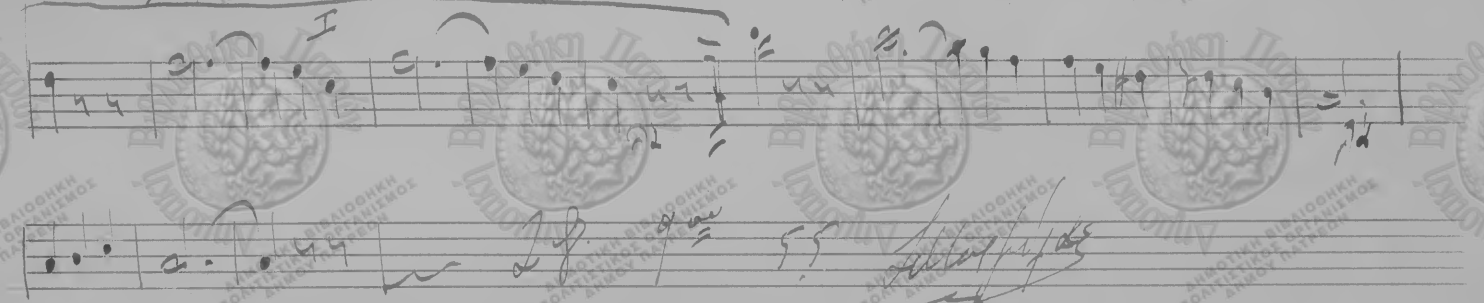
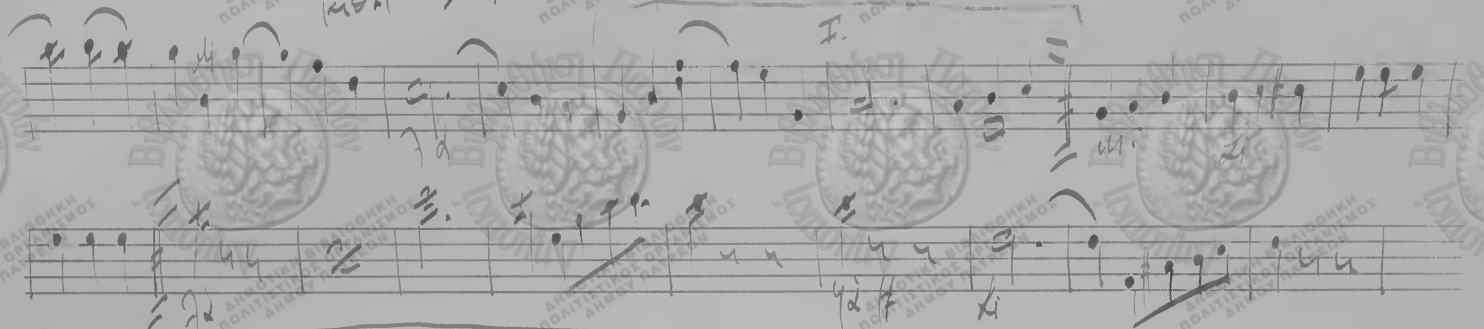
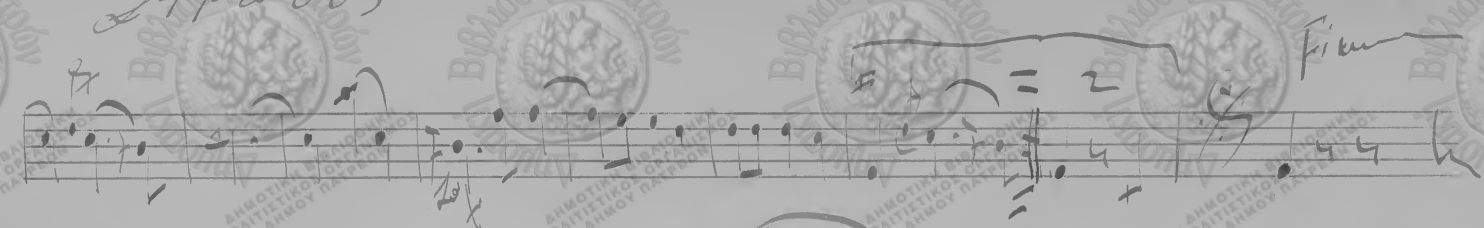
Handwritten musical notation on a single staff, continuing the piece with various note values.

Handwritten musical notation on a single staff, including a section marked *rit.* and a double bar line.

Handwritten musical notation on a single staff, continuing the melodic line.

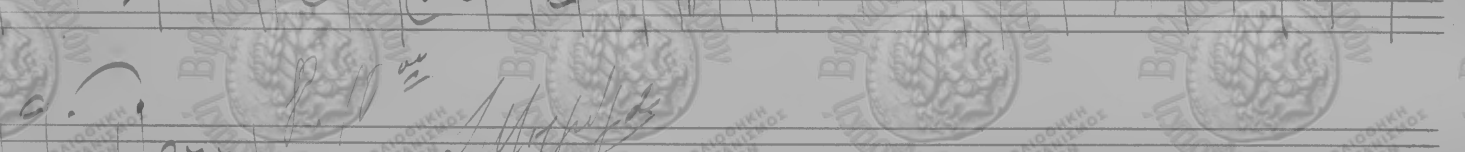
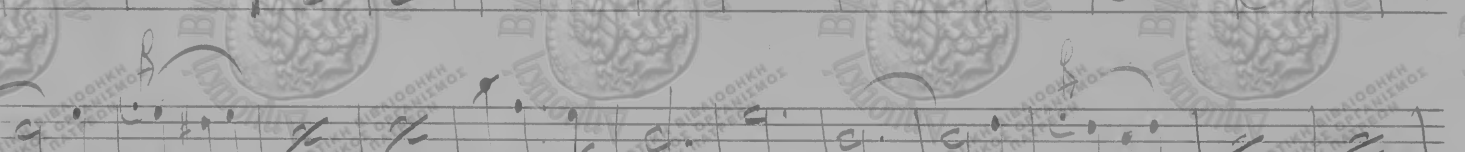
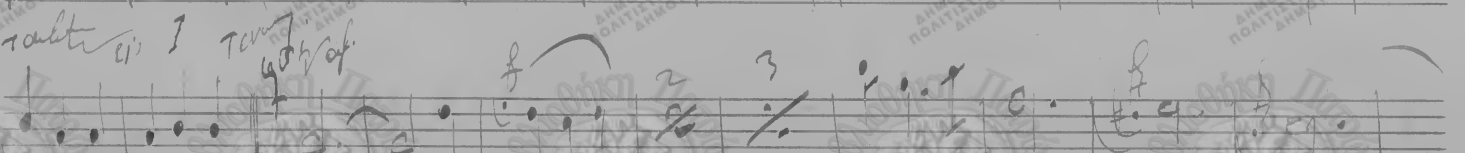
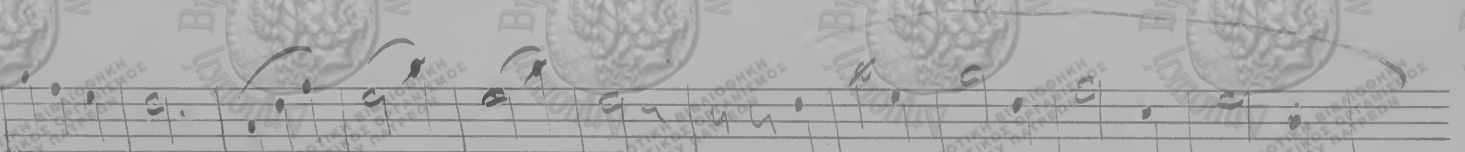
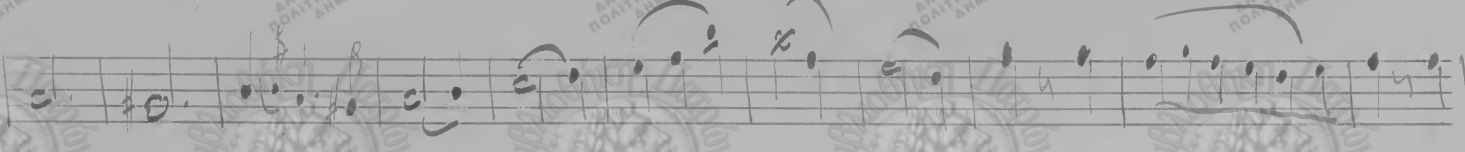
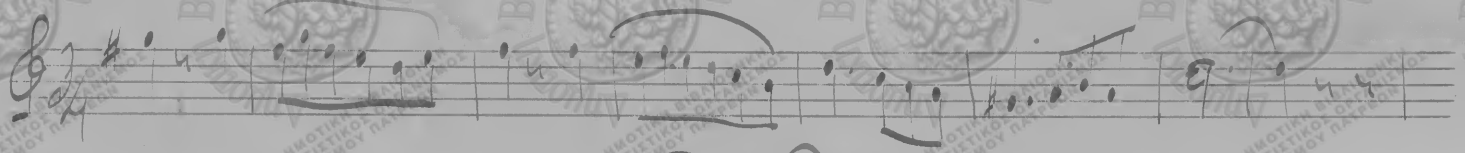
Handwritten musical notation on a single staff, concluding the piece with a final note and a double bar line.

Αδελφ. Αποδός.

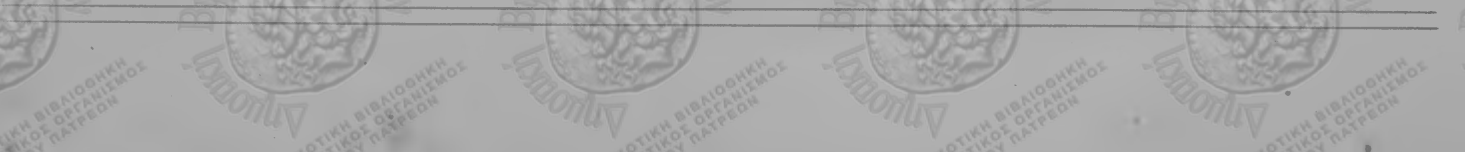
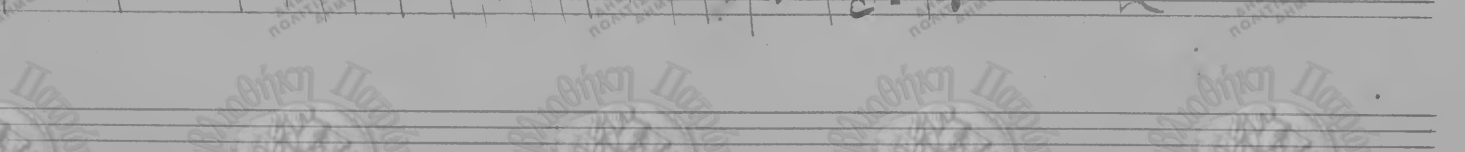
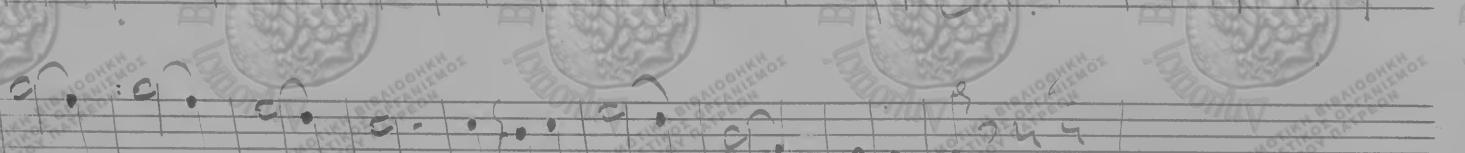
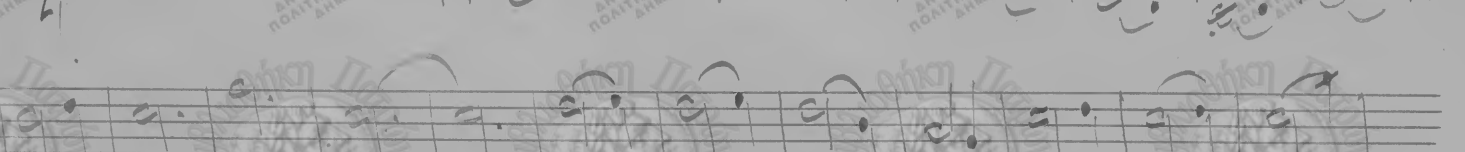
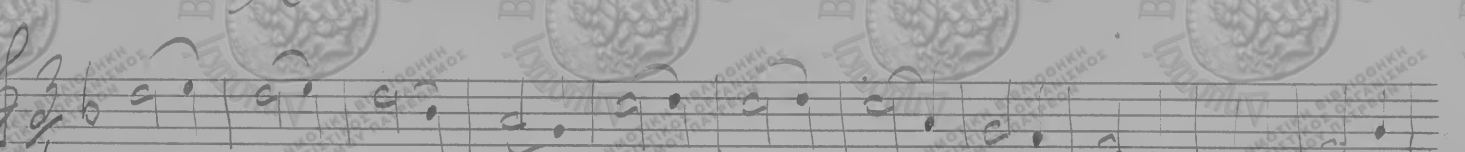


Tempo br. Valse.

3 2 ω 71 6 71 α 0 7.



Lorella Valse Tardis



Lovakia

Handwritten musical notation on a single staff, starting with a treble clef and a key signature of two flats.

Two staves of handwritten musical notation, featuring various note values and rests.

Two staves of handwritten musical notation, including a section marked with a 3/4 time signature.

Two staves of handwritten musical notation, with a 3/4 time signature and a fermata over the first measure.

Two staves of handwritten musical notation, continuing the piece with various rhythmic patterns.

Two staves of handwritten musical notation, showing a change in the melodic line.

Two staves of handwritten musical notation, featuring a more complex rhythmic structure.

Two staves of handwritten musical notation, concluding the piece with a final cadence.

Handwritten notes at the bottom of the page, including the number '100' and a signature.

abs. P. 1. 1. 1.

Handwritten musical notation on a single staff, starting with a treble clef, a key signature of one sharp (F#), and a 3/4 time signature. The notes are mostly quarter and eighth notes.

Handwritten musical notation on a single staff, continuing the melody with various note values and rests.

Handwritten musical notation on a single staff, featuring a series of eighth notes and quarter notes.

Handwritten musical notation on a single staff, showing a melodic line with some ties and rests.

Handwritten musical notation on a single staff, including a section with a double bar line and a repeat sign.

Handwritten musical notation on a single staff, with the handwritten word *pa keta* written above the notes.

Handwritten musical notation on a single staff, featuring a melodic line with some ties and rests.

Handwritten musical notation on a single staff, showing a melodic line with some ties and rests.

Handwritten musical notation on a single staff, including a section with a double bar line and a repeat sign.

Handwritten musical notation on a single staff, with the handwritten word *lit* written above the notes.

Handwritten musical notation on a single staff, featuring a melodic line with some ties and rests.

Handwritten musical notation on a single staff, showing a melodic line with some ties and rests.

Handwritten musical notation on a single staff, including a section with a double bar line and a repeat sign.

Handwritten musical notation on a single staff, featuring a melodic line with some ties and rests.

Handwritten musical notation on a single staff, showing a melodic line with some ties and rests.

Index ad. a 4

W. 3. an

W. 4. Bis. 3.

Co. ad.

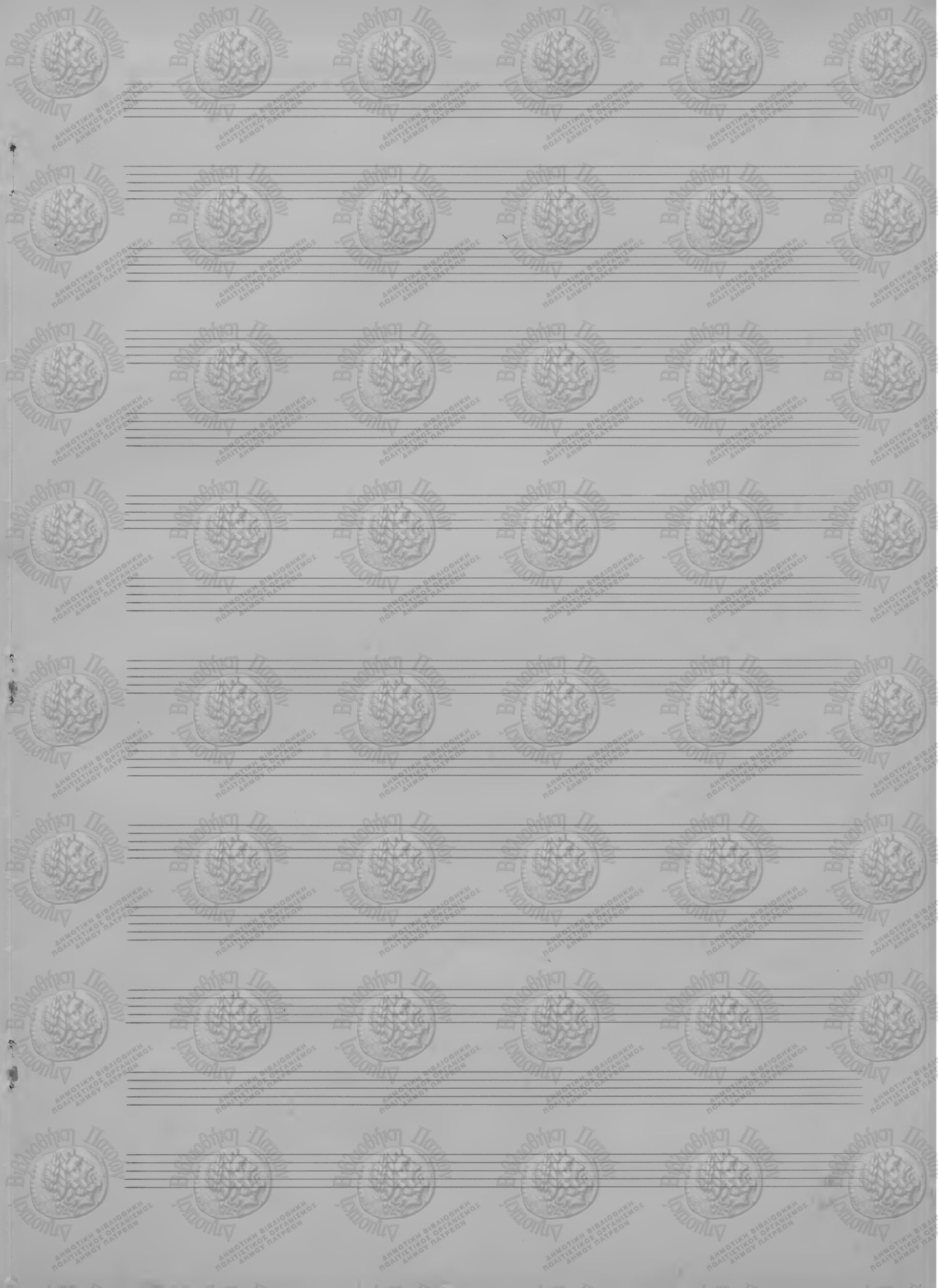
SOPRA LE ONDE

Επι των Κρησίων
Σελίδος

Handwritten musical score for Soprano Le Onde. The score consists of 12 staves of music. The first staff begins with a treble clef and a 4/4 time signature. The music is written in a single system with various notes, rests, and dynamic markings. The score includes several measures with notes beamed together, and some measures with longer note values. There are also some markings that look like 'f' and 'p' for dynamics. The handwriting is clear and legible.

Α. Πρωτόπυρος
3-11-1958

Handwritten signature and date
3-11-1958



Εορταστικό *Αδελφότητα*

2^{da} Viol^{na}
Musical staff with treble clef, 2/4 time signature, and dynamic marking *ff*. The staff contains a melodic line with various note values and rests.

Tempo
Musical staff with treble clef and 2/4 time signature. It features a melodic line with some rests and a dynamic marking of *ff*.

Fine
Musical staff with treble clef and 2/4 time signature. It contains a melodic line with a dynamic marking of *ff* and a *Fine* marking at the end.

No 2^{da}
Musical staff with treble clef and 2/4 time signature. It features a melodic line with various note values and rests.

Musical staff with treble clef and 2/4 time signature. It contains a melodic line with various note values and rests.

Musical staff with treble clef and 2/4 time signature. It features a melodic line with various note values and rests.

No 3^{or}
Musical staff with treble clef and 2/4 time signature. It contains a melodic line with various note values and rests.

Musical staff with treble clef and 2/4 time signature. It features a melodic line with various note values and rests.

3 2 1 2 3

Handwritten musical notation on a single staff, starting with a treble clef and a 3/4 time signature. The notes are mostly quarter and eighth notes.

Handwritten musical notation on a single staff, continuing the melody with various note values and rests.

Handwritten musical notation on a single staff, featuring a triplet of eighth notes and a fermata over a note.

Handwritten musical notation on a single staff, showing a sequence of eighth and sixteenth notes.

Handwritten musical notation on a single staff, with a mix of note values and rests.

Handwritten musical notation on a single staff, including a fermata and a final note.

Handwritten musical notation on a single staff, starting with the word "Coda" written vertically on the left. It includes a treble clef and a 3/4 time signature.

Handwritten musical notation on a single staff, consisting of a series of eighth notes.

Handwritten musical notation on a single staff, with a complex rhythmic pattern of eighth and sixteenth notes.

Handwritten musical notation on a single staff, featuring a melodic line with various note values.

Handwritten musical notation on a single staff, with a series of eighth notes and rests.

Handwritten musical notation on a single staff, showing a sequence of eighth notes.

Handwritten musical notation on a single staff, with a mix of note values and rests.

Handwritten musical notation on a single staff, ending with a double bar line and a fermata.

Handwritten signature and date: "Kopinski 1856" and "1856".

