

Κατάθεση

24

Ποσού

Κατάθεση 4.7-

# Ευφρασία Α Καίριατα Χριστούγεννων. Βραχύνει

No

$\text{D}: \text{b} \text{b} / \frac{2}{4}$

Handwritten musical notation for the first system, featuring a treble clef, a key signature of two flats (B-flat and E-flat), and a 2/4 time signature. The melody consists of quarter notes: G4, A4, B4, B4, A4, G4, F4, E4, D4, C4, B3, A3.

Ευφρασία

$\text{D}: \text{b} \text{b} \text{b} / \frac{3}{4}$

Handwritten musical notation for the second system, featuring a treble clef, a key signature of three flats (B-flat, E-flat, and A-flat), and a 3/4 time signature. The melody consists of quarter notes: G4, A4, B4, B4, A4, G4, F4, E4, D4, C4, B3, A3.

-CORNI - II Κακάρτα. Χριστουγέννων.

No

Handwritten musical notation for the first system of 'Κακάρτα'. It consists of two staves. The top staff is in treble clef with a 2/4 time signature. The bottom staff is in bass clef. The music features a melody with eighth and sixteenth notes, and a bass line with quarter and eighth notes. There are some markings above the notes, possibly indicating fingerings or dynamics.

Κακάρτα

Handwritten musical notation for the second system of 'Κακάρτα'. It consists of two staves. The top staff is in treble clef with a 3/4 time signature. The bottom staff is in bass clef. The music features a melody with quarter and eighth notes, and a bass line with quarter and eighth notes. There are some markings above the notes, possibly indicating fingerings or dynamics.

Κακάρτα Νέου Έτους

Handwritten musical notation for the third system of 'Κακάρτα Νέου Έτους'. It consists of three staves. The top staff is in treble clef with a 2/4 time signature and a key signature of one sharp (F#). The middle and bottom staves are in bass clef. The music features a melody with eighth and sixteenth notes, and a bass line with quarter and eighth notes. There are some markings above the notes, possibly indicating fingerings or dynamics.

Δ. 27. 11. 76.

Coruchta II. Καρκυδα. Χριστουγεννιων.

Handwritten musical notation for the first system. It consists of two staves. The top staff is in treble clef with a key signature of one flat and a time signature of 2/4. The bottom staff is in bass clef. The music features a melody with eighth and sixteenth notes, and a bass line with quarter and eighth notes.

4ΕΓΓΑΤΟΥ-

Handwritten musical notation for the second system. It consists of three staves. The top staff is in treble clef with a key signature of one flat and a time signature of 3/4. The middle and bottom staves are in bass clef. The music continues with a melody and bass line, including some rests and dynamic markings.

Καρκυδα Ν.600 Σταυρ

Handwritten musical notation for the third system. It consists of two staves. The top staff is in treble clef with a key signature of one flat and a time signature of 3/4. The bottom staff is in bass clef. The music concludes with a final cadence and a double bar line.

H-

4

Clasino I

Kajavta Xpistounevva

No

D.C.

ΕΙΣΗΓΟΡ

Kajavta Neou Etouf

Chryfyas 11-11-1976

u.

Βάσει in Mi<sup>b</sup> Καίματα Σοβιέτου Πιούρων

No

Handwritten musical notation for the first piece. It consists of two staves. The first staff begins with a treble clef, a key signature of two flats (B-flat and E-flat), and a 2/4 time signature. The melody is written with eighth and quarter notes, some with stems pointing down. The second staff continues the melody with similar notation and includes a fermata at the end.

Τέτατον

Handwritten musical notation for the second piece. It consists of two staves. The first staff begins with a treble clef, a key signature of three flats (B-flat, E-flat, and A-flat), and a 3/4 time signature. The melody is written with quarter notes, some with stems pointing down. The second staff continues the melody and includes a fermata at the end.

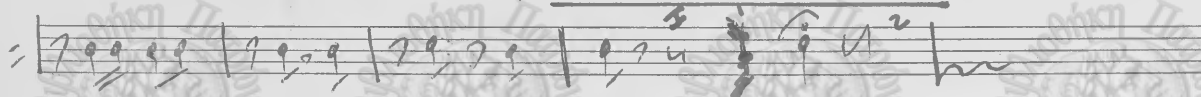
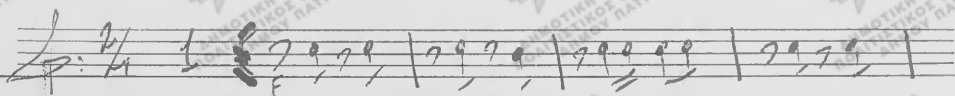
Καίματα Νιου Γκτοου

Handwritten musical notation for the third piece. It consists of two staves. The first staff begins with a treble clef, a key signature of two flats (B-flat and E-flat), and a 2/4 time signature. The melody is written with eighth and quarter notes. The second staff continues the melody and includes a fermata at the end.

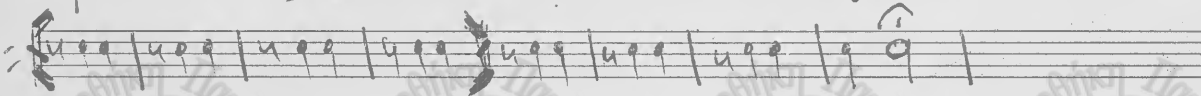
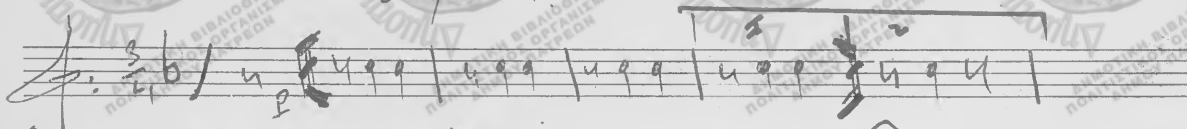
Handwritten signatures or initials at the bottom of the page.

Σοφία Α. Μις Καζάντα λριε του γέννων

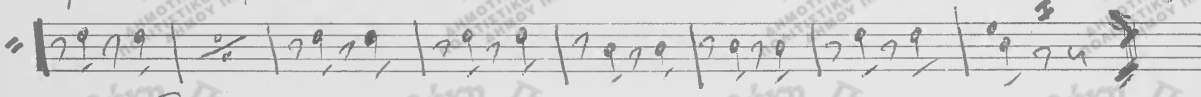
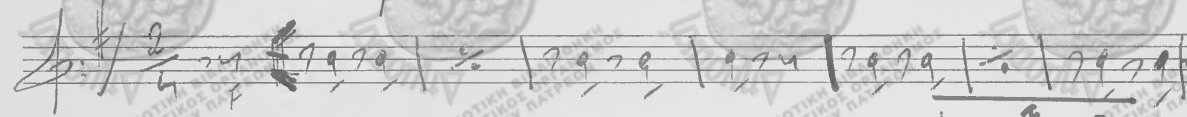
No 1



Εξάκτοσ



Καζάντα Νέου Γέννου



Coruella 1<sup>a</sup> 2<sup>a</sup> 3<sup>a</sup> Κατάνα Σπιρουφίνας

No 1

Ετάρον

Κατάνα Νέου Έτους

Σ. 15.11.76 Ορίβας



Coruetta A. Kargava Nevo Trous

No

# Quintus Mi<sup>b</sup> Kizavda Xristoufirar-

No

Handwritten musical notation for the first system. It consists of two staves. The top staff uses a treble clef and contains several measures of music with notes and rests. The bottom staff uses a bass clef and contains corresponding notes and rests. The notation is in a simple, handwritten style.

46 Kizavda

Handwritten musical notation for the second system. It consists of three staves. The top staff begins with a treble clef and a 3/4 time signature. The notation continues across the three staves. A section of the music in the top staff is enclosed in a hand-drawn rectangular box.

## Kizavda Neiu Etas

Handwritten musical notation for the third system. It consists of two staves. The top staff uses a treble clef. The notation is similar to the previous systems, with notes and rests. A section of the music in the top staff is enclosed in a hand-drawn rectangular box.

Երես. III. Հայրիկ Չրիտայի մասին.

№1

Հայրիկ Չրիտայի մասին

Հայրիկ Նևոյ Գլոս

Հայրիկ Նևոյ Գլոս

*Handwritten signature*

30-11-1976

Clavuro A. Jib

Κιθαρα Σπικροφύτων

No

Handwritten musical notation for the first piece, featuring a treble clef, a key signature of one flat (B-flat), and a 2/4 time signature. The notation includes a melody line with various notes and rests, and a bass line with chords and a double bar line.

Χελιδόνι

Handwritten musical notation for the second piece, featuring a treble clef, a key signature of one flat (B-flat), and a 3/4 time signature. The notation includes a melody line with a '6' marking above it, and a bass line with chords and a double bar line.

Κιθαρα Νέου Έτους

Handwritten musical notation for the third piece, featuring a treble clef, a key signature of one flat (B-flat), and a 2/4 time signature. The notation includes a melody line with various notes and rests, and a bass line with chords and a double bar line.

Handwritten signature or initials.

22-11-76

Handwritten signature or initials.

Corueta A. Li<sup>b</sup>

Kazvta Spigoupevovw

No

Handwritten musical notation for the first system, including a treble clef, a key signature of one flat, and a 2/4 time signature. The notation consists of two staves with various notes and rests.

Kazvta Ndw ab touc.

Handwritten musical notation for the second system, including a treble clef, a key signature of one flat, and a 2/4 time signature. The notation consists of two staves with various notes and rests.

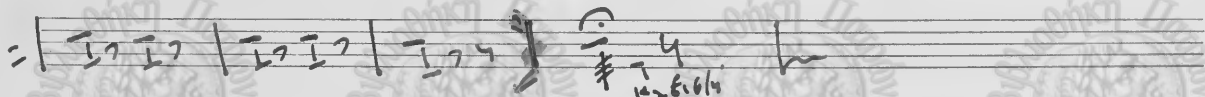
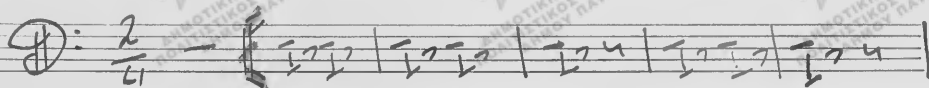
εξαρτων.

Handwritten musical notation for the third system, including a treble clef, a key signature of two flats, and a 3/4 time signature. The notation consists of two staves with various notes and rests.

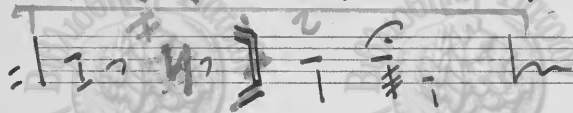
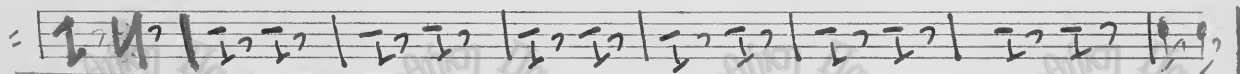
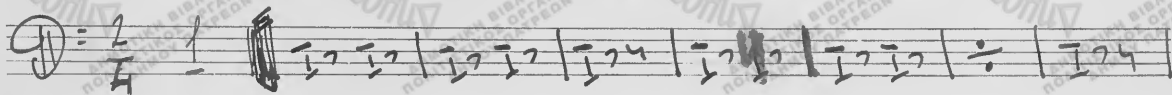
CASSA. PIATTI.

# Καθάρια Χριστούγεννα

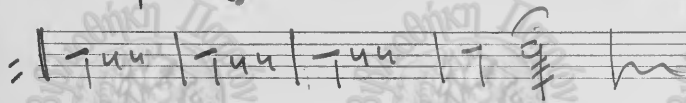
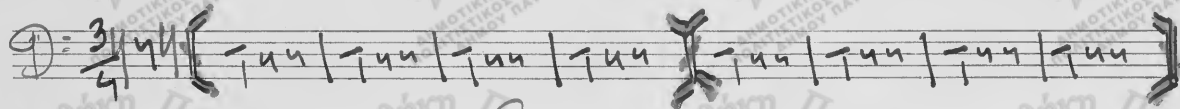
No 1



Καθάρια Νέου Έτους.



Νο 2



*Handwritten signature*  
15.11.76  
Kasparian

CORNI - II. Κατάλυτα Ζηρώτου Πέρρων

No

ΕΓΓΑΤΤΟΝ

Κατάλυτα Νέου Έτους

Sax. F. O. N. - IN. Mi<sup>b</sup>

Καζαβτα Χριστουγεννων

No

Handwritten musical notation for the first system, including a treble clef, a 2/4 time signature, and a key signature of one flat. The notation consists of two staves with various notes and rests.

ΕΙΣΑΓΩΓΗ

Handwritten musical notation for the second system, including a treble clef, a 3/4 time signature, and a key signature of one flat. The notation consists of two staves with various notes and rests.

Καζαβτα Νεου Χρως

Handwritten musical notation for the third system, including a treble clef, a 2/4 time signature, and a key signature of one flat. The notation consists of two staves with various notes and rests.



Corueta 1<sup>a</sup> Li. 6

Καθάρτα Σπριτουριέρων

*Allegretto*

No 1

Handwritten musical notation for the first system, including a treble clef, a key signature of one flat, and a 2/4 time signature. The notation consists of two staves with various rhythmic values and accidentals.

*Andante*

Handwritten musical notation for the second system, including a treble clef, a key signature of two flats, and a 3/4 time signature. The notation consists of two staves with various rhythmic values and accidentals.

*Allegretto*

Καθάρτα Νέου Έτους.

Handwritten musical notation for the third system, including a treble clef, a key signature of one flat, and a 2/4 time signature. The notation consists of two staves with various rhythmic values and accidentals.

15. 11. 76

# Εμφύσιο -

# Καίματα 2 προτάσεων.

No 1

# Επίτομο

Εμφάνιση Α.

# Καθάρια Νεανύτητα

№

The first system of the handwritten musical score consists of three staves. The top staff begins with a treble clef, a key signature of one sharp (F#), and a common time signature (C). The melody is written in a simple, folk-like style with eighth and sixteenth notes. The second and third staves appear to be accompaniment, with the third staff containing some numerical markings (3 and 2) below the notes, possibly indicating fingerings or rhythmic patterns. The notation is clear and legible.

This section contains two systems of blank musical staves, each consisting of five lines. These staves are provided for the continuation of the musical composition.

This section contains two systems of blank musical staves, each consisting of five lines. These staves are provided for the continuation of the musical composition.

Tambuzo. Καίματα Σπιζοσπέντερ. / Κ. α. 1.

№ 1

Tambuzo

Καίματα Νέων Έτους

Καίματα

# ΕΥΦΡΟΝΙΟ. Κιθάρα & Πιάνο

No

Handwritten musical notation for the first system. It features a treble clef, a key signature of two flats (B-flat and E-flat), and a 2/4 time signature. The notation includes a series of eighth and sixteenth notes, with some notes beamed together. There are also some handwritten annotations and a large '2' written below the staff.

Ευφροσύνη

Handwritten musical notation for the second system. It features a treble clef, a key signature of two flats (B-flat and E-flat), and a 3/4 time signature. The notation includes a series of eighth and sixteenth notes, with some notes beamed together. There are also some handwritten annotations and a large '2' written below the staff.

Handwritten musical notation for the third system. It features a treble clef, a key signature of two flats (B-flat and E-flat), and a 3/4 time signature. The notation includes a series of eighth and sixteenth notes, with some notes beamed together. There are also some handwritten annotations and a large '2' written below the staff.

Handwritten musical notation for the fourth system. It features a treble clef, a key signature of two flats (B-flat and E-flat), and a 3/4 time signature. The notation includes a series of eighth and sixteenth notes, with some notes beamed together. There are also some handwritten annotations and a large '2' written below the staff.

Handwritten musical notation for the fifth system. It features a treble clef, a key signature of two flats (B-flat and E-flat), and a 3/4 time signature. The notation includes a series of eighth and sixteenth notes, with some notes beamed together. There are also some handwritten annotations and a large '2' written below the staff.

Handwritten musical notation for the sixth system. It features a treble clef, a key signature of two flats (B-flat and E-flat), and a 3/4 time signature. The notation includes a series of eighth and sixteenth notes, with some notes beamed together. There are also some handwritten annotations and a large '2' written below the staff.

Handwritten musical notation for the seventh system. It features a treble clef, a key signature of two flats (B-flat and E-flat), and a 3/4 time signature. The notation includes a series of eighth and sixteenth notes, with some notes beamed together. There are also some handwritten annotations and a large '2' written below the staff.

Caseq. Prattis. Καζάρτα Σπιγτου Γιένων.

No

Handwritten musical notation for the first system. It consists of two staves. The top staff begins with a treble clef and a 2/4 time signature. The music is written in a simple, rhythmic style with notes and rests. The bottom staff continues the melody with similar notation.

Καζάρτα

Handwritten musical notation for the second system. It consists of two staves. The top staff begins with a treble clef and a 3/4 time signature. The music continues with notes and rests, including some dynamic markings like 'f' and '2'.

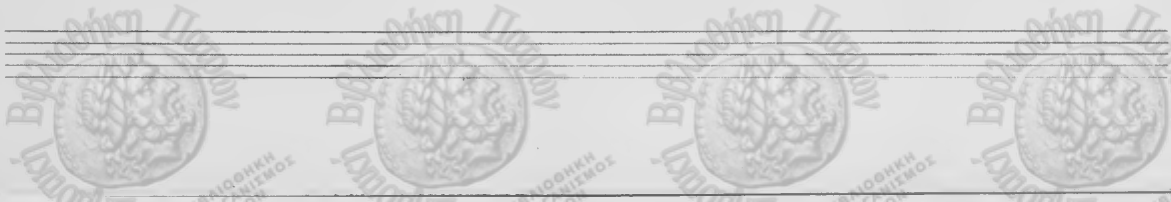
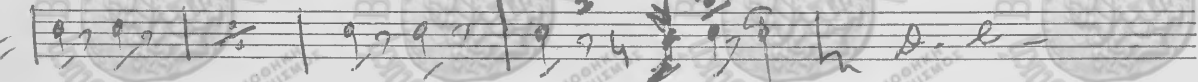
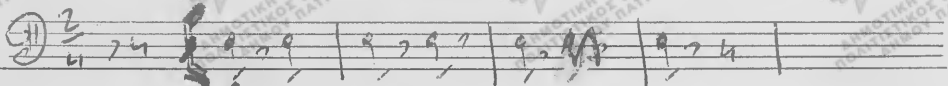
Καζάρτα Νέου Έτους

Handwritten musical notation for the third system. It consists of two staves. The top staff begins with a treble clef and a 2/4 time signature. The music is written in a simple, rhythmic style. A diagonal line is drawn across the entire system, striking through the notation. The bottom staff continues the melody with similar notation.

Οπίσθεν

# CASA-PiATTI. ΚΑΤΑΚΥΤΛ ΝΕΙΟΥ ΕΤΟΥΣ-

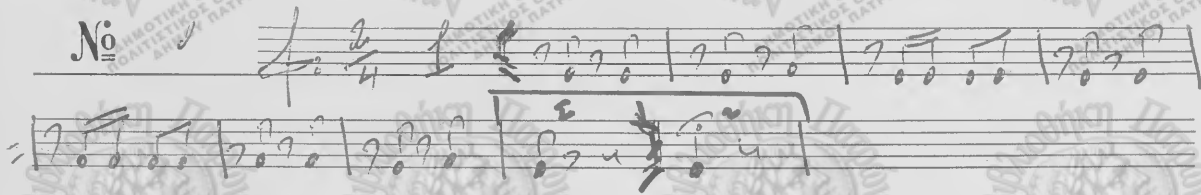
No



Сорус III.

Каҕарта 201600р'уран -

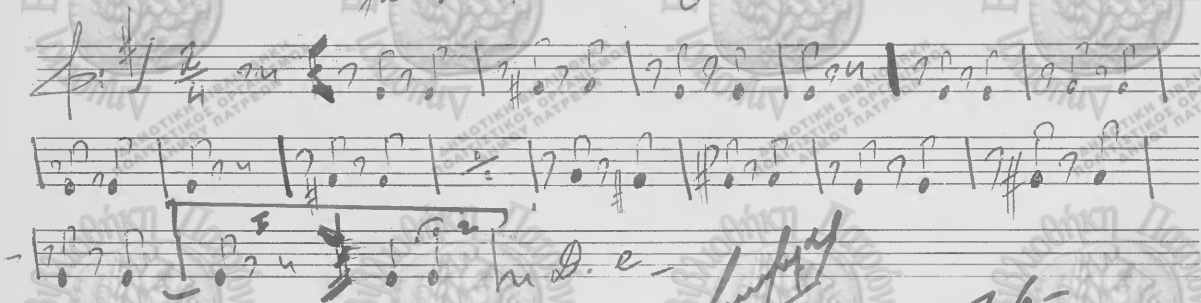
№



2. Еҕаһов



Каҕарта Неов 2. Еҕаһов



*[Handwritten signature]*

30-11-76-  
Gal'annay



Cozuetta 1.

Kajarta Xpibroupe'vrv

No 1

6/8

Handwritten musical notation for the first piece, Cozuetta 1. It consists of two staves. The first staff begins with a treble clef and a 6/8 time signature. The music is written in a single system with various rhythmic values and slurs.

Kajarta Neou of rous

2/4

Handwritten musical notation for the second piece, Kajarta Neou of rous. It consists of three staves. The first staff begins with a treble clef and a 2/4 time signature. The music is written in a single system with various rhythmic values and slurs.

Exultation

3/4

Handwritten musical notation for the third piece, Exultation. It consists of three staves. The first staff begins with a treble clef and a 3/4 time signature. The music is written in a single system with various rhythmic values and slurs.

Cocui A.

Kladia Nou Etouf.

No

Handwritten musical score for "Cocui A. Kladia Nou Etouf." The score is written on three staves. The first staff begins with a treble clef, a key signature of one sharp (F#), and a 2/4 time signature. The music consists of eighth and sixteenth notes. A dynamic marking "F." is present. The second staff continues the melody. The third staff shows a bass line with some notes beamed together. The score ends with a double bar line and repeat dots.

COZU-A. Mi<sup>o</sup>

# Καθαρά Σπριγίου Ρέντων.

No 1

"Ε Ζαζορ.

Καθαρά Νόου Έτους

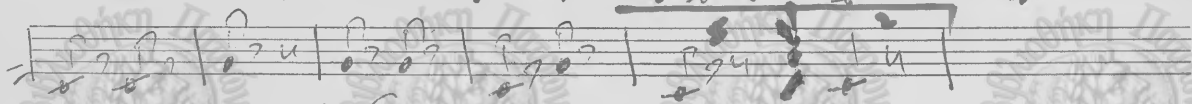
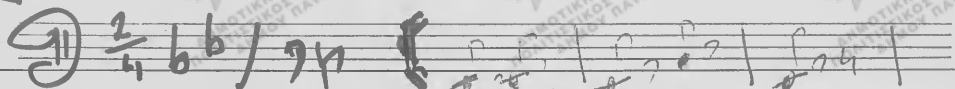
*Handwritten signature*

15. 11. 76

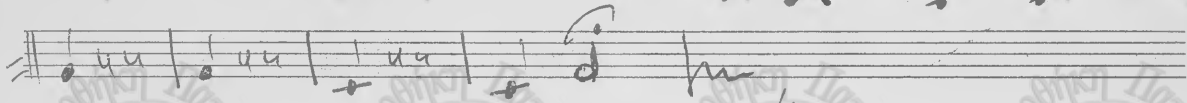
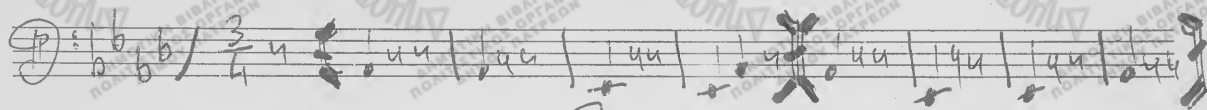
*Handwritten signature*

# BASSI in Mi $\flat$ ΚΑΙΧΥΤΑ ΧΡΙΣΤΟΥ ΓΕΝΝΟΥ

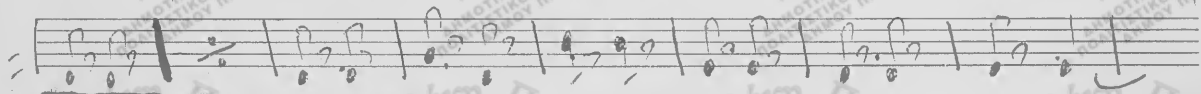
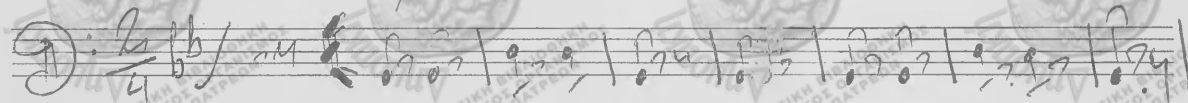
No



7



ΚΑΙΧΥΤΑ ΝΕΟΥ ΚΑΛΩΣ



*Handwritten signature*

22-11-1976 Καρπασίον